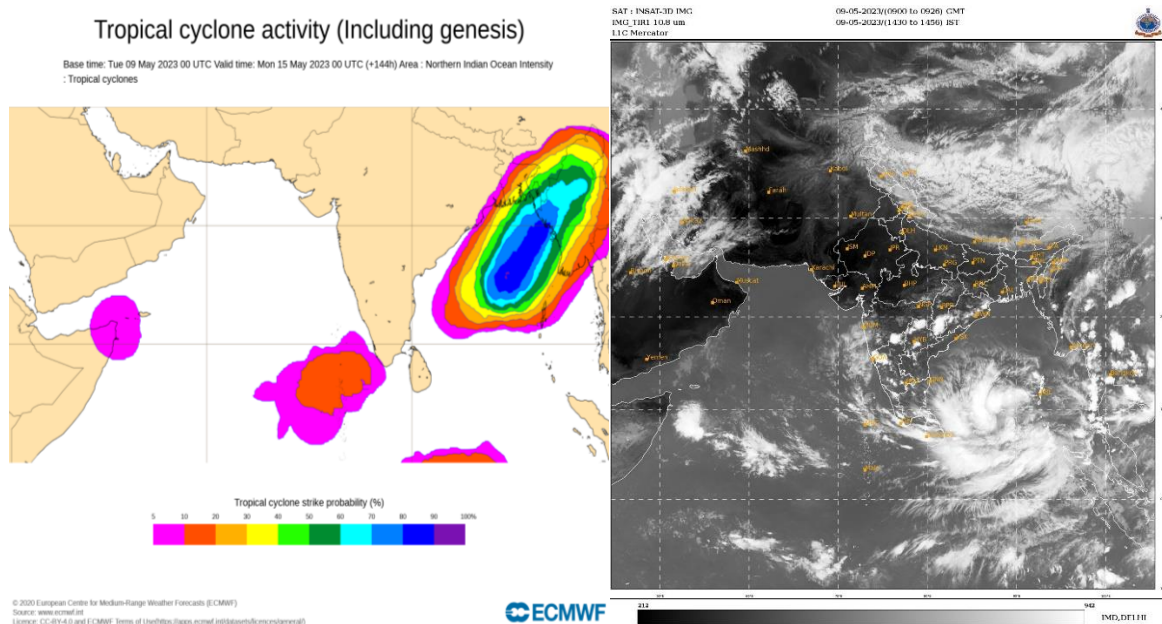


BANGLADESH SEVERE WEATHER SITUATION UPDATE

Published on May 9, 2023 17:00 BST (+06:00 UTC)

Situation Overview (Probable Cyclone Mocha)

- According to Bangladesh Meteorological Department, the Low Pressure Area (LPA) over south-east Bay of Bengal and adjoining south Andaman Sea has intensified into a ‘Well-Marked Low’ last night. According to IMD, it is likely to intensify into a ‘Depression’ by today evening over the same region and subsequently into a **Cyclonic Storm** over southeast Bay of Bengal and adjoining areas of east-central Bay of Bengal and Andaman Sea on 10th May. It is likely to move initially north-northwestwards towards east-central Bay of Bengal till 11th May. Thereafter, it is likely to recurve gradually and move north-northeastwards towards Bangladesh-Myanmar coasts.
- Latest satellite imagery indicates a low level circulation center over south-east Bay of Bengal. Westerly wind burst over the south Bay of Bengal is seen, which will favor cyclogenesis by increasing vorticity and convergence over the region during next 12 hours. Considering the surface observations, associated maximum sustained wind speed is 28-37 km/h.
- The ECMWF strike probability based on 09 May morning (6 am) is higher (~80%) towards Myanmar-Bangladesh coast. As the Depression is yet to form, it is likely to recurve further.
- According to JTWC, an area of convection (Invest 91B) previously located near 7.3N and 92.0E is now located near 7.2N 89.6E, approximately 594 km southwest of Port Blair. Maximum sustained surface winds are estimated at 42 to 51 km/h. The potential for the Development of a significant tropical cyclone within the next 24 hours is upgraded to medium.



Important Note

This situation update is prepared to help humanitarian workers better interpret severe weather forecasts. The document is intended for specific groups only, NOT for public dissemination. **This is not a Warning Bulletin!** To access Special Weather Bulletins of BMD, click [here](#).

Data Sources

Bangladesh Meteorological Department (BMD), Regional Specialized Meteorological Center (RSMC), Indian Meteorological Department (IMD), Joint Typhoon Warning Center (JTWC), European Center for Medium Range Weather Forecast (ECMWF), Joint Research Center – (JRC-EU)

This update is prepared as a forecast guidance by [Regional Integrated Multi-Hazard Early Warning System \(RIMES\)](#) in collaboration with Bangladesh Meteorological Department. Visit www.bmd.gov.bd for bulletins.