

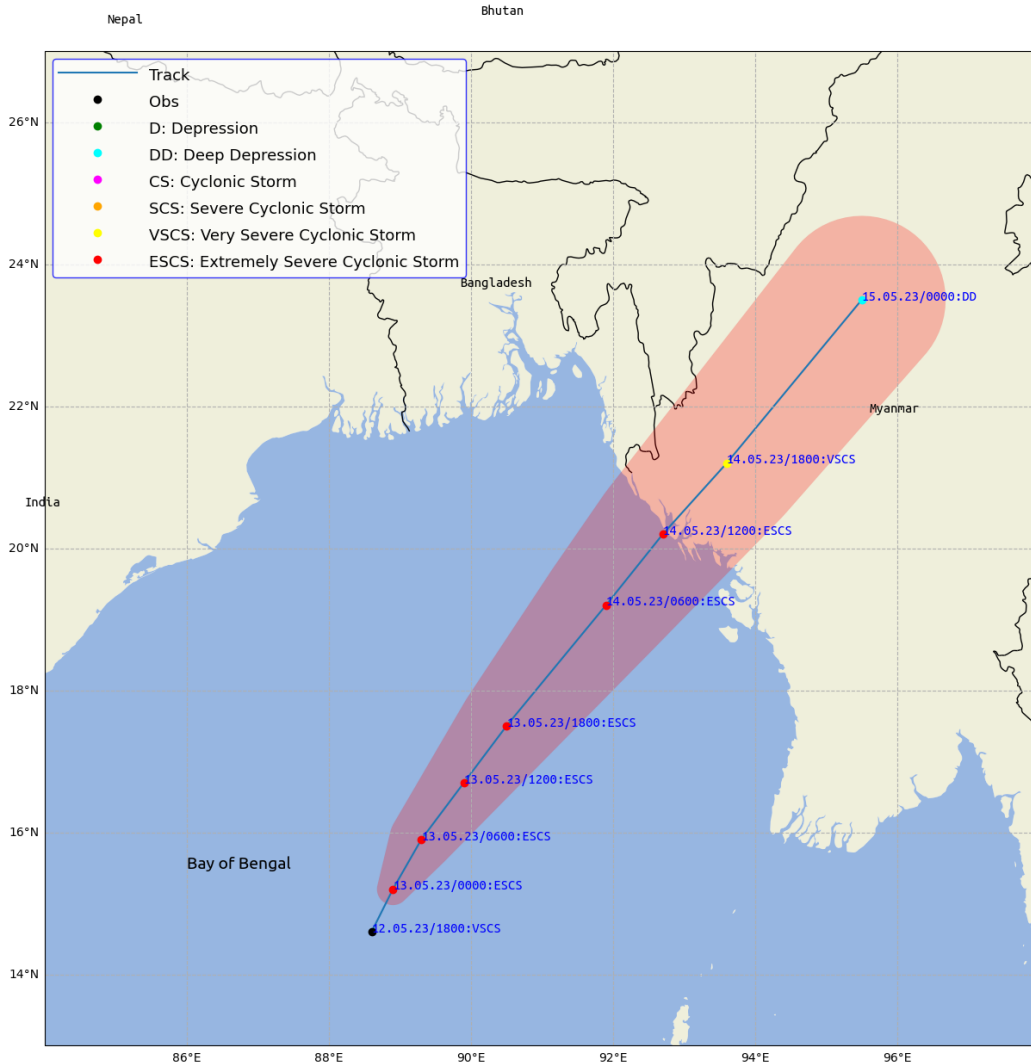
BANGLADESH SEVERE WEATHER SITUATION UPDATE

Published on May 12, 2023 22:30 BST (+06:00 UTC)

Situation Overview (Cyclone Mocha)

- According to Bangladesh Meteorological Department (12 May 2023 2030 BST), the very severe cyclonic storm “Mocha” over east central Bay and adjoining area moved further north-northeastwards over the same area and was located at 6pm today (12 May 2023) about 860 km south-south-west of Cox’s Bazar port. It is very likely to move north-northeastwards and intensify further into an **Extremely Severe Cyclonic Storm** over east-central Bay of Bengal during night of today, the 12th May 2023. It may cross Cox’s Bazar - North Myanmar coast on 14 May 2023 as a Very Severe Cyclonic Storm with maximum sustained wind speed of 150-160 km/h gusting to 175 km/h.
- Cox’s Bazar and adjoining coastal regions will experience the peripheral effect of the very severe cyclonic storm by the evening of 13 May 2023. Maximum sustained surface wind speed estimated at 166 km/h. Maritime ports of **Chattogram, Cox’s Bazar** have been advised to hoist **Great Danger Signal No. Eight**. Maritime ports of Mongla and Payra have been advised to keep hoisted **Local Warning Signal No. Four**. All fishing boats/vessels over north bay and deep sea have been advised to remain in shelter till further notice.

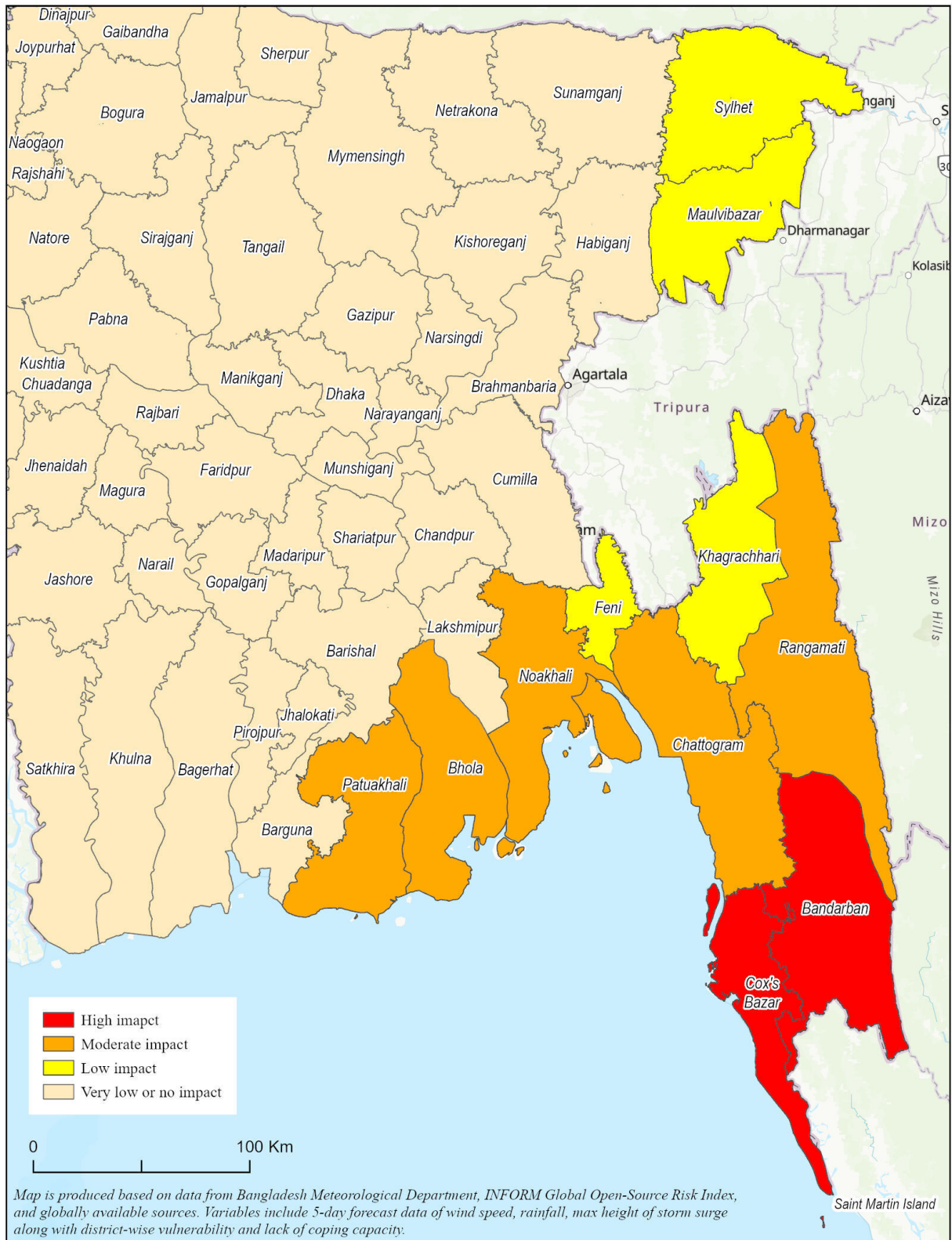
Observed & forecast track along with CoU of cyclone "Mocha"
as on 12 May 2022, 10 PM BST



This update is prepared as a forecast guidance by [Regional Integrated Multi-Hazard Early Warning System \(RIMES\)](#) in collaboration with Bangladesh Meteorological Department. Visit www.bmd.gov.bd for bulletins.

Potential Impact Map for Cyclone Mocha for 14-May-2023

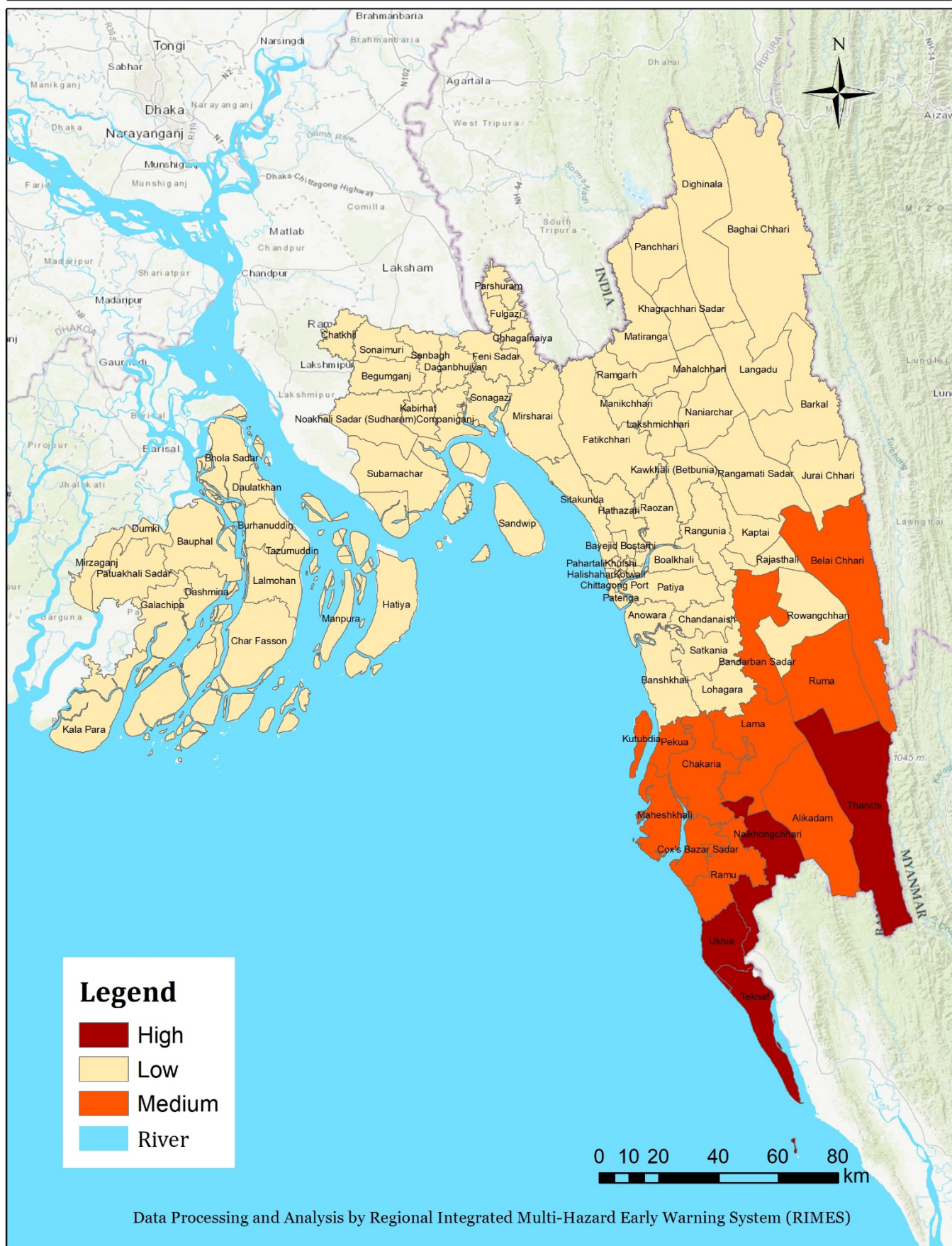
Last updated: 12-May-23 6:55 PM



This update is prepared as a forecast guidance by [Regional Integrated Multi-Hazard Early Warning System \(RIMES\)](https://www.rimes.int) in collaboration with Bangladesh Meteorological Department. Visit www.bmd.gov.bd for bulletins.

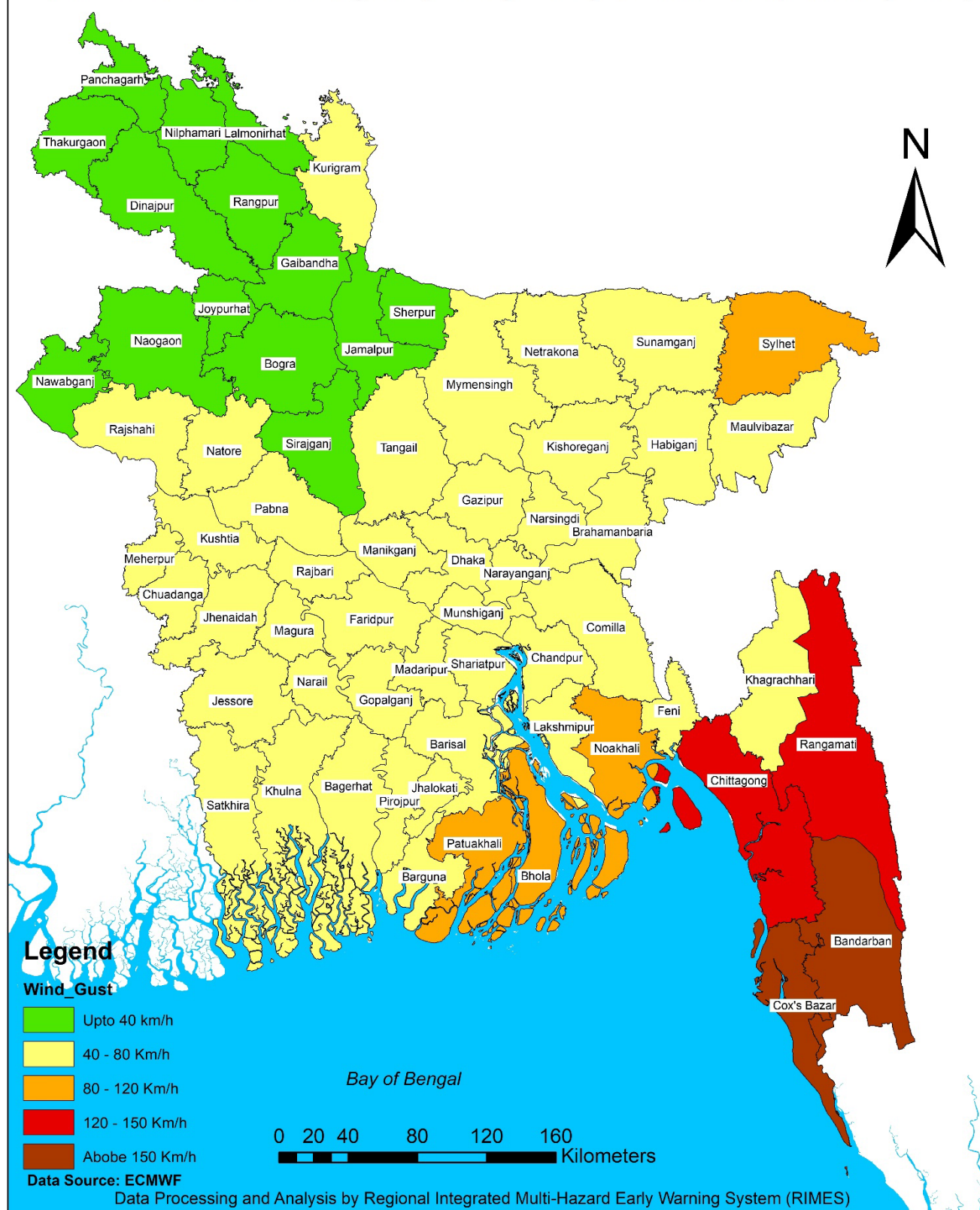
Potential Impact Map of Cyclone Mocha based on INFORM Index, BMD and Other Global Center Forecast

(considering forecast wind gust, storm surge and rainfall; vulnerability and lack of coping capacity across upazilas)

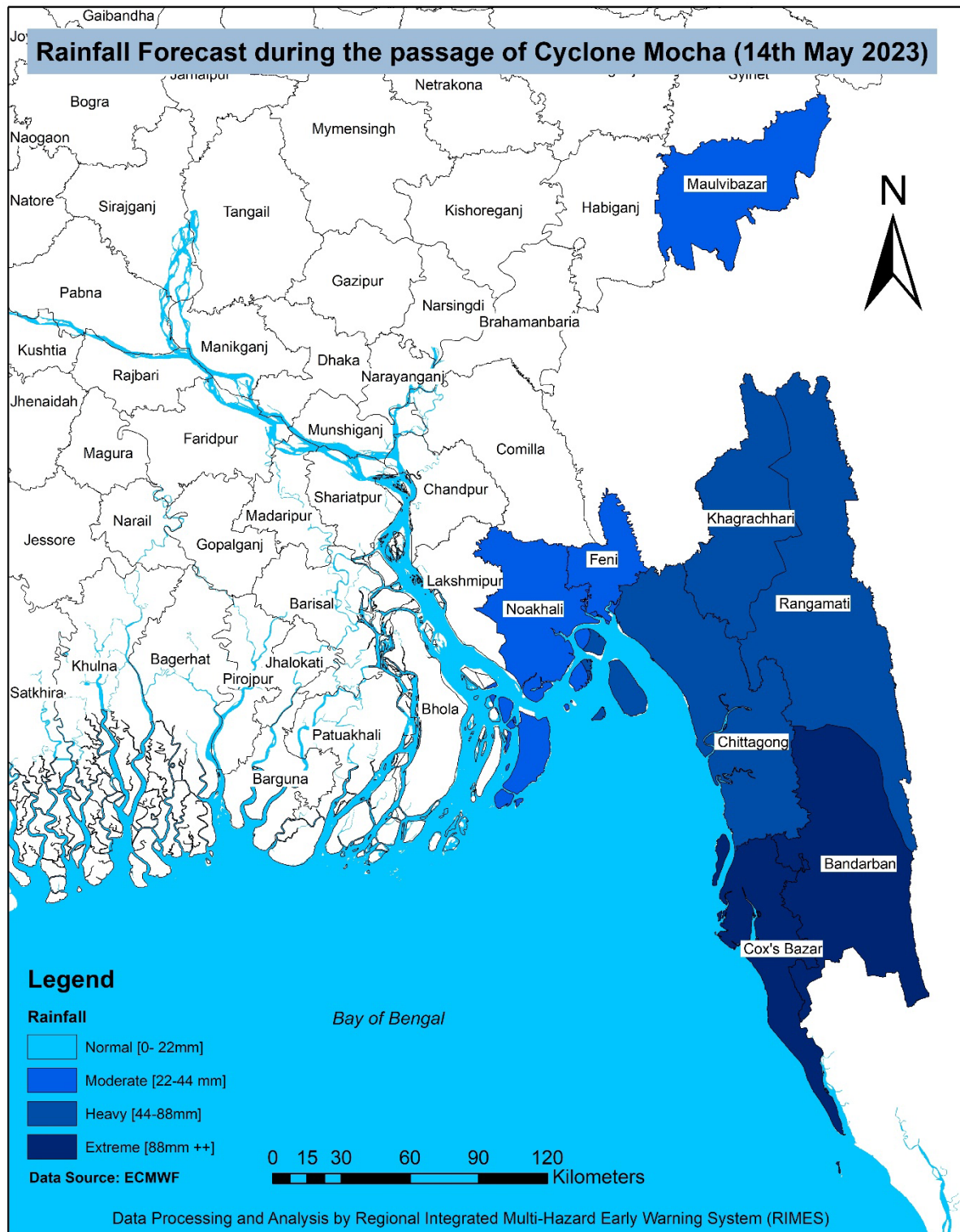


in collaboration with Bangladesh Meteorological Department. VISIT www.bma.gov.bd for bulletins.

Wind Gust Forecast during the passage of Cyclone Mocha (14th May 2023)



This update is prepared as a forecast guidance by [Regional Integrated Multi-Hazard Early Warning System \(RIMES\)](#) in collaboration with Bangladesh Meteorological Department. Visit www.bmd.gov.bd for bulletins.



Important Note

This situation update is prepared to help humanitarian workers better interpret severe weather forecasts. The document is intended for specific groups only, NOT for public dissemination. **This is not a Warning Bulletin!** To access Special Weather Bulletins of BMD, click [here](#).

Data Sources

Bangladesh Meteorological Department (BMD), Regional Specialized Meteorological Center (RSMC), Indian Meteorological Department (IMD), Joint Typhoon Warning Center (JTWC), European Center for Medium Range Weather Forecast (ECMWF), Joint Research Center – (JRC-EU)

This update is prepared as a forecast guidance by [Regional Integrated Multi-Hazard Early Warning System \(RIMES\)](#) in collaboration with Bangladesh Meteorological Department. Visit www.bmd.gov.bd for bulletins.