

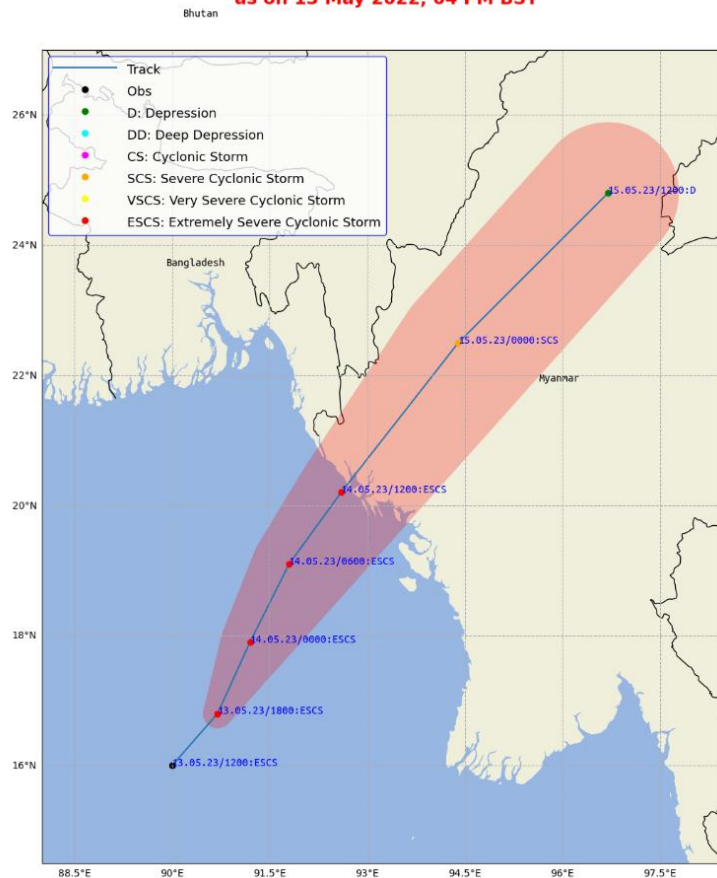
BANGLADESH SEVERE WEATHER SITUATION UPDATE

Published on May 13, 2023 16:00 BST (+06:00 UTC)

Situation Overview (Cyclone Mocha)

- According to Bangladesh Meteorological Department (13 May 2023 1330 BST), the very severe cyclonic storm “Mocha” over east central Bay and adjoining area moved further north-northeastwards over the same area and was located at 12 noon today (13 May 2023) about 630 km south-southwest of Cox’s Bazar port. It may cross Cox’s Bazar - North Myanmar coast around 06am to 06 pm of 14 May 2023. Coastal regions of Chattogram and Barishal divisions will experience the peripheral effect of the very severe cyclonic storm by tonight of 13 May 2023. All fishing boats and trawlers over north bay have been advised to remain in shelter till further notice.
- Cox's bazar and its offshore Islands and Chars will come under **great danger signal no. Ten.** and are likely to be inundated by the wind driven surge height of 08-12 feet. Chattogram and their offshore islands and chars will come under **great danger signal no, Eight.** Maritime ports of Payra has been advised to hoist great danger signal no. Eight (r) Eight. Maritime ports of Mongla has been advised to keep hoisted local warning signal number Four (r) Four. The coastal districts of Chattogram. Feni, Noakhali, Laxmipur. Chandpur, Barishal, Bhola, Patuakiali, Jalokathi Pirojpur, Borguna and their offshore islands and chars will come under great danger signal no. Eight (r) Eight. The coastal districts of Feni, Noakhali, Laxmipur, Chandpur, Bhola and their offshore islands and chars are likely to be inundated by the wind driven surge height of 05-07 feet above normal astronomical tide.

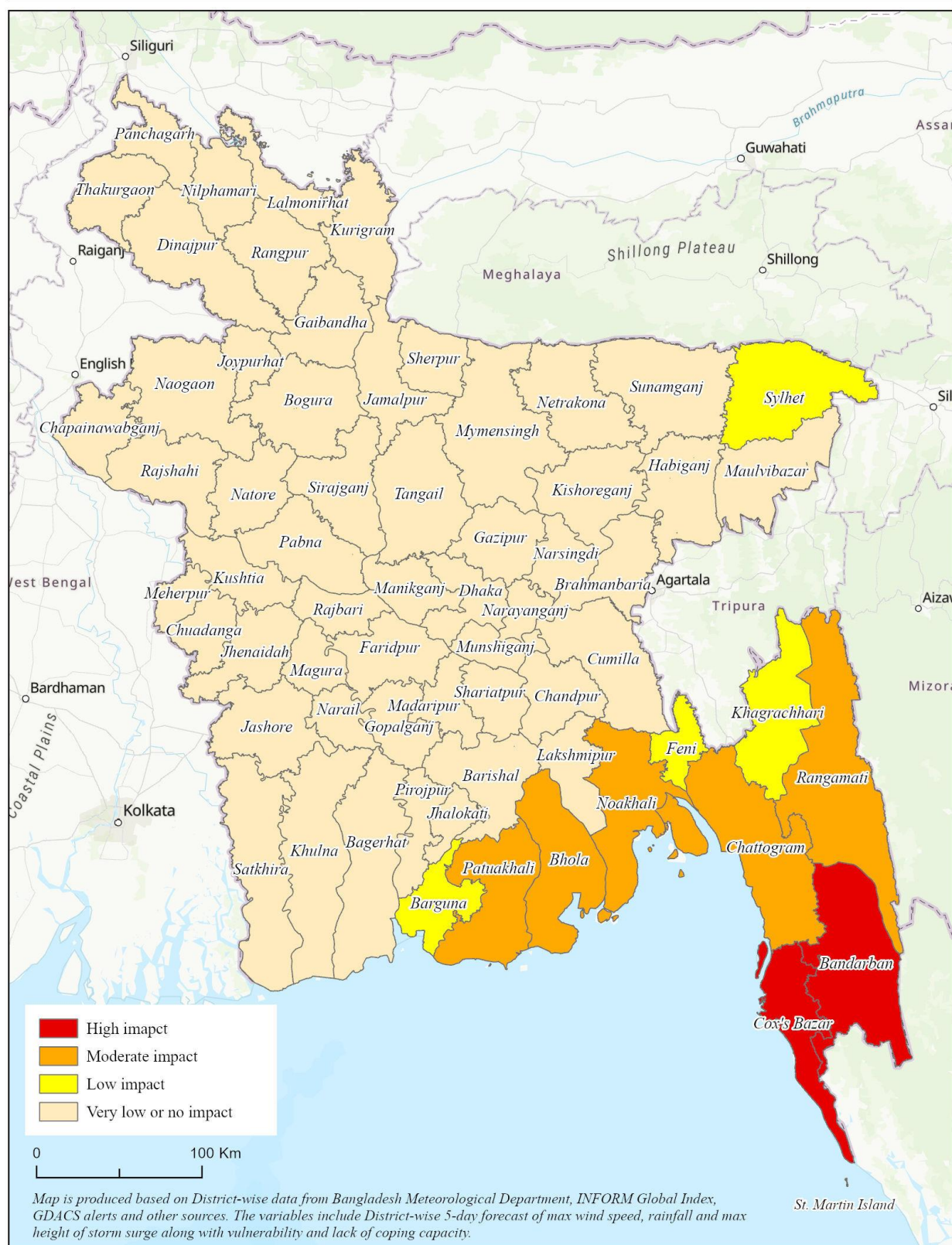
Observed & forecast track along with CoU of cyclone "Mocha"
as on 13 May 2022, 04 PM BST



This update is prepared as a forecast guidance by [Regional Integrated Multi-Hazard Early Warning System \(RIMES\)](#) in collaboration with Bangladesh Meteorological Department. Visit www.bmd.gov.bd for bulletins.

Potential Impact of Cyclone Mocha for 14-May-2023

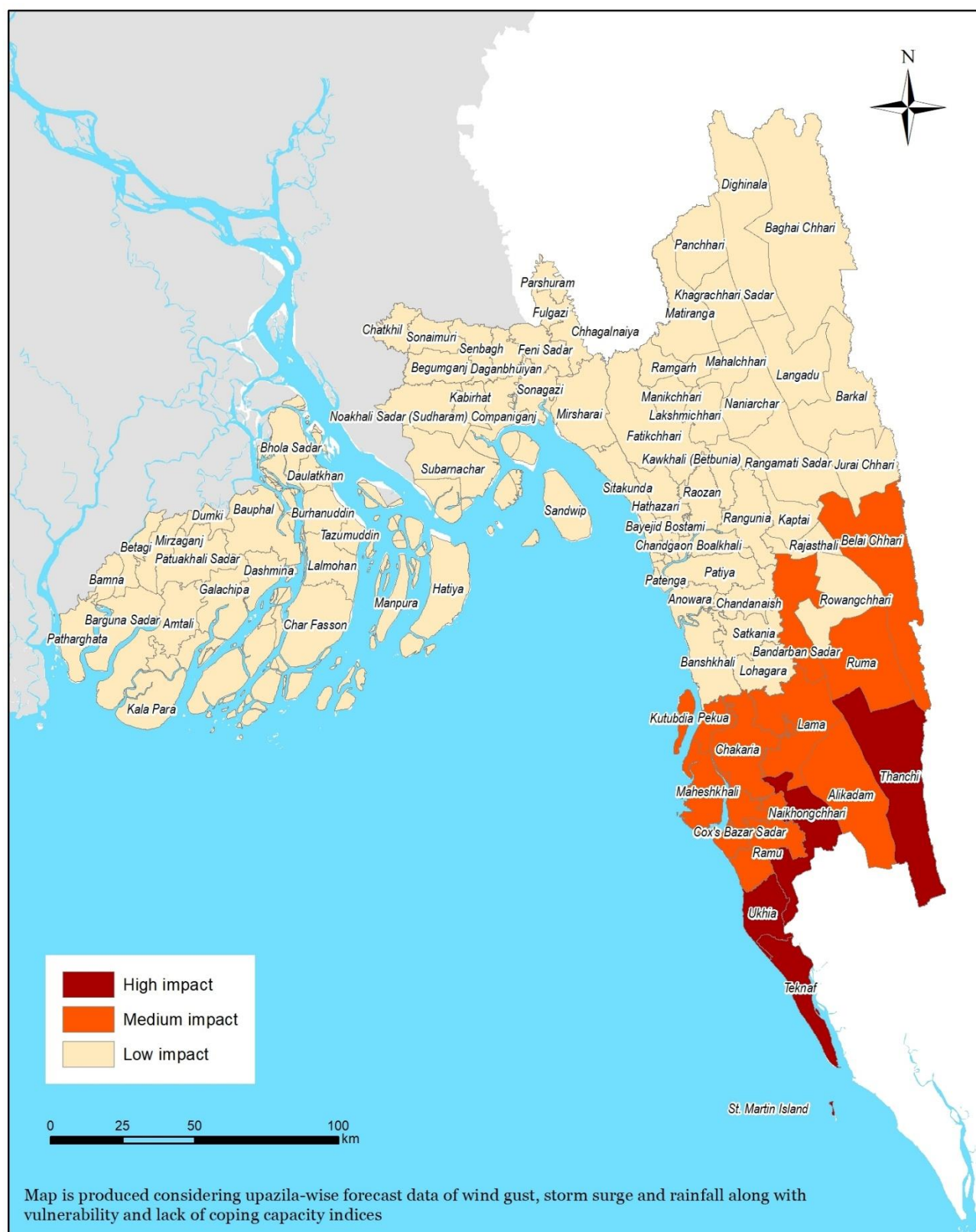
Last updated: 13-May-23 3:23 PM



This update is prepared as a forecast guidance by [Regional Integrated Multi-Hazard Early Warning System \(RIMES\)](https://www.rimes.int/) in collaboration with Bangladesh Meteorological Department. Visit www.bmd.gov.bd for bulletins.

Potential Impact Map of Cyclone Mocha based on INFORM Index, BMD and Other Global Center Forecast

Last updated: 13/5/2023 4:25:37 pm

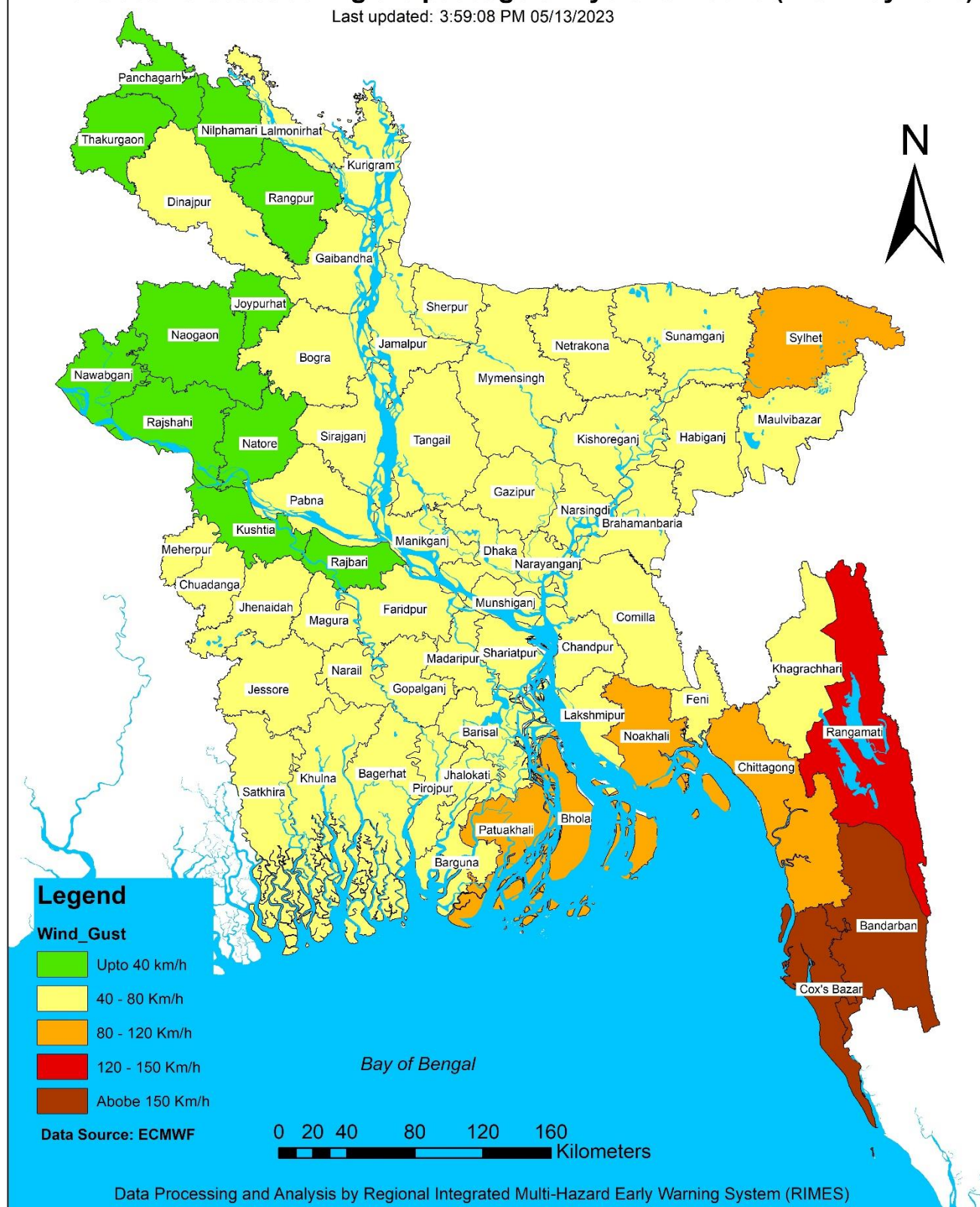


Data Processing and Analysis by Regional Integrated Multi-Hazard Early Warning System (RIMES)

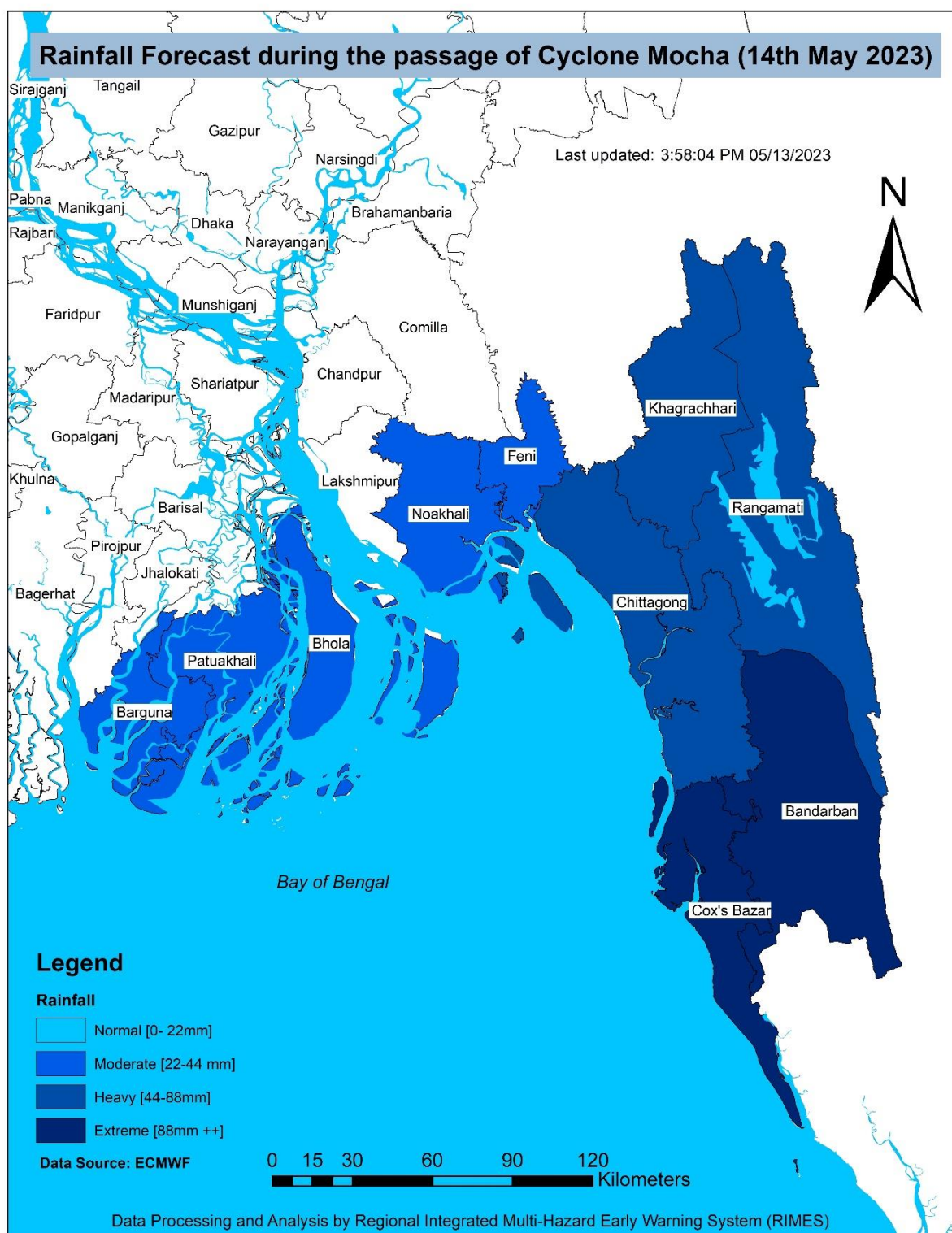
This update is prepared as a forecast guidance by [Regional Integrated Multi-Hazard Early Warning System \(RIMES\)](#) in collaboration with Bangladesh Meteorological Department. Visit www.bmd.gov.bd for bulletins.

Wind Gust Forecast during the passage of Cyclone Mocha (14th May 2023)

Last updated: 3:59:08 PM 05/13/2023



This update is prepared as a forecast guidance by [Regional Integrated Multi-Hazard Early Warning System \(RIMES\)](#) in collaboration with Bangladesh Meteorological Department. Visit www.bmd.gov.bd for bulletins.



Important Note

This situation update is prepared to help humanitarian workers better interpret severe weather forecasts. The document is intended for specific groups only, NOT for public dissemination. **This is not a Warning Bulletin!** To access Special Weather Bulletins of BMD, click [here](#).

Data Sources

Bangladesh Meteorological Department (BMD), Regional Specialized Meteorological Center (RSMC), Indian Meteorological Department (IMD), Joint Typhoon Warning Center (JTWC), European Center for Medium Range Weather Forecast (ECMWF), Joint Research Center – (JRC-EU)

This update is prepared as a forecast guidance by [Regional Integrated Multi-Hazard Early Warning System \(RIMES\)](#) in collaboration with Bangladesh Meteorological Department. Visit www.bmd.gov.bd for bulletins.