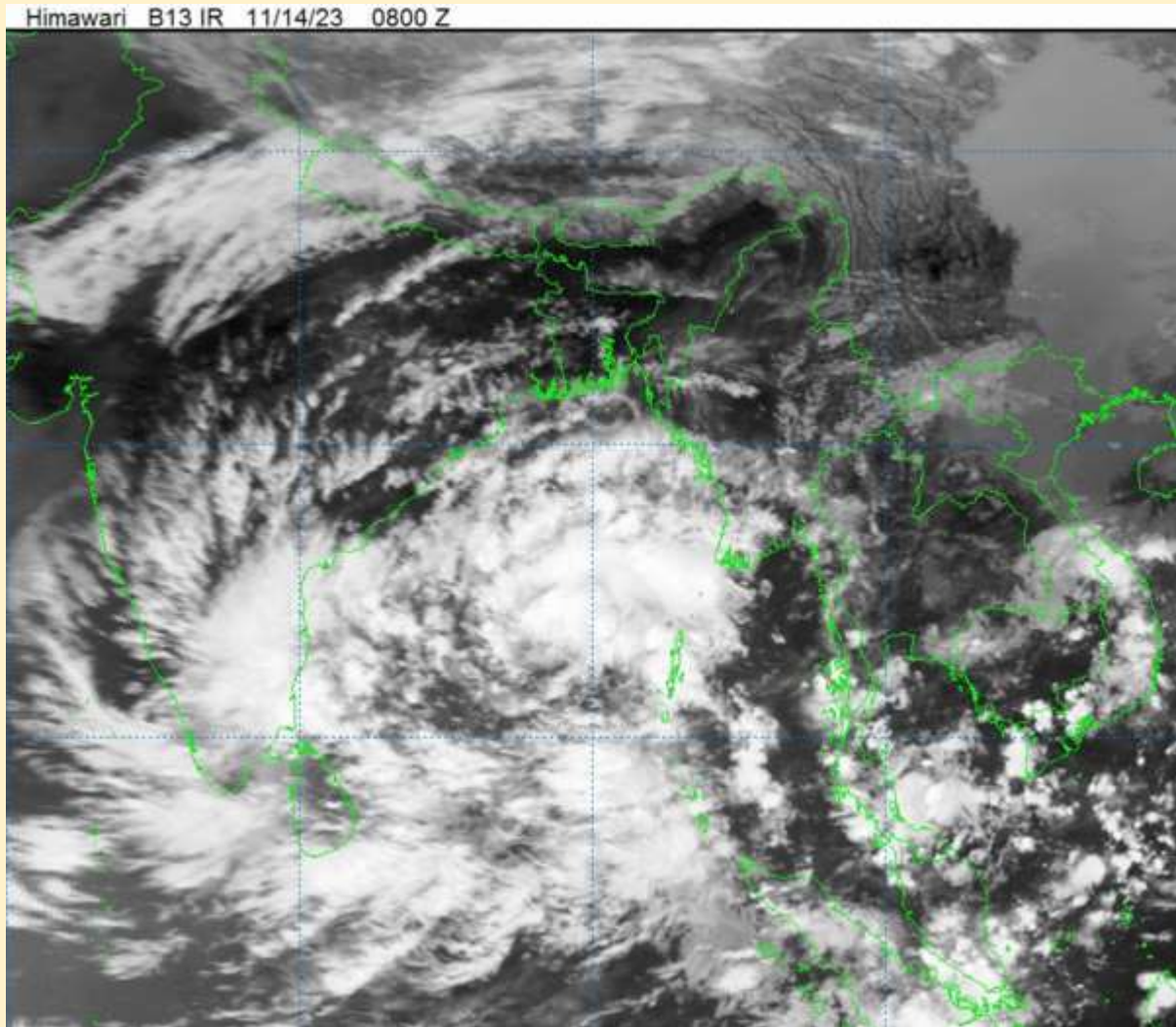


BANGLADESH SEVERE WEATHER SITUATION UPDATE

Published on November 14, 2023 18:30 BST (+06:00 UTC)

Situation Overview (Well Marked Low)

- According to the Bangladesh Meteorological Department (BMD) (14 November 2023 1800 BST), the Low-Pressure Area (LPA) intensified into a Well-Marked Low and lies over the same area of the Southeast Bay of Bengal and adjoining Andaman & Nicobar Islands at 1800 BST, 14th of November.

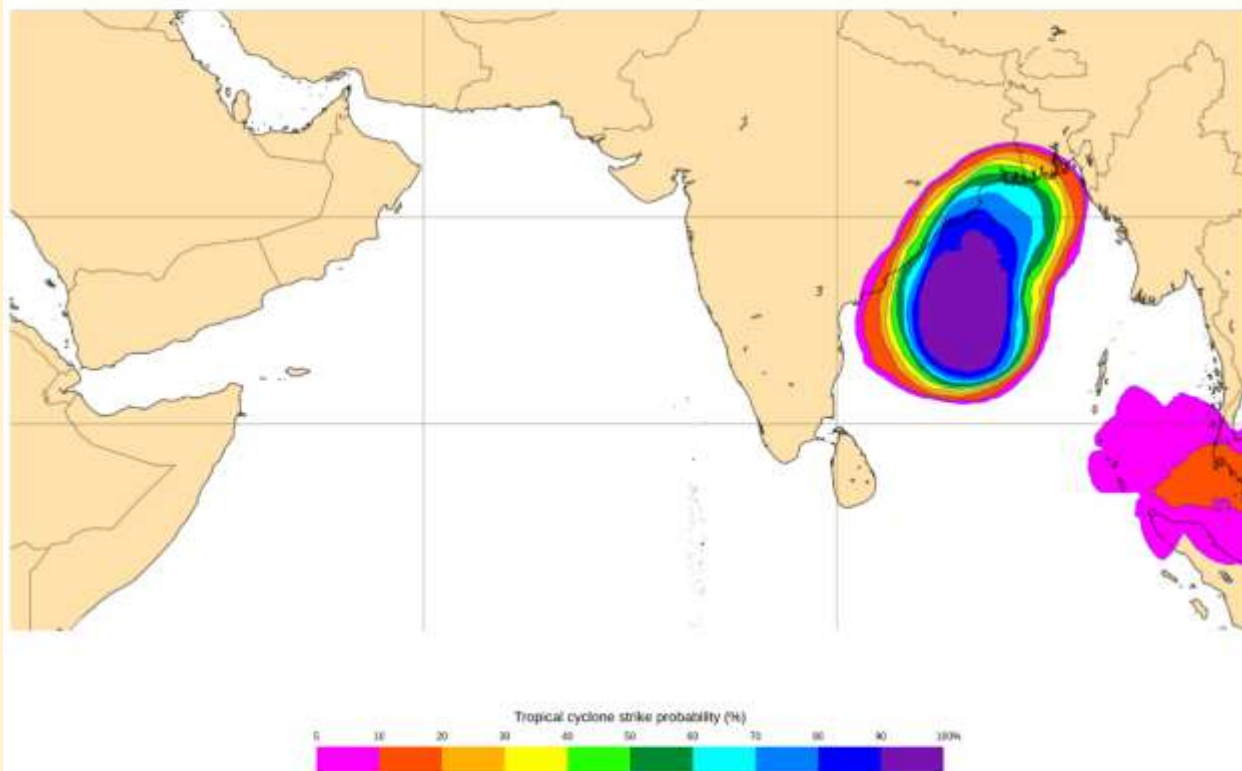


- It is very likely to move west-northwestwards and intensify into a Depression over West Central Bay of Bengal on 15th November 2023. Thereafter, it would move northwestwards and may intensify into a Deep Depression over the West Central Bay of Bengal off the Andhra Pradesh coast on 16th November. Subsequently, it would recurve North and Northeastwards and reach Northwest Bay of Bengal off Odisha coast on 17th November.
- According to BMD, all fishing boats and trawlers over North Bay and the deep sea have been advised to come close to the coast and proceed with caution till further notice.
- According to the ECMWF's forecast, there is a 60-70% likelihood of strike on the Odisha-West Bengal coast and a 50-60% possibility for the West Bengal and adjoining Khulna division of Bangladesh within next 72 hours. However, the landfall location and intensity of the system are still uncertain and may vary.

This update is prepared as a forecast guidance by [Regional Integrated Multi-Hazard Early Warning System](#) (RIMES) in collaboration with Bangladesh Meteorological Department. Visit www.bmd.gov.bd for bulletins.

Tropical cyclone activity (Including genesis)

Base time: Tue 14 Nov 2023 00 UTC Valid time: Fri 17 Nov 2023 00 UTC (+72h) Area : Northern Indian Ocean Intensity : Tropical cyclones



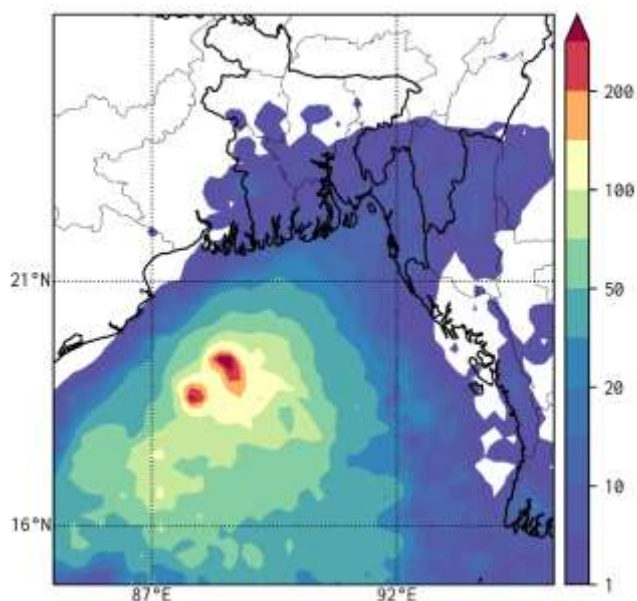
© 2023 European Centre for Medium-Range Weather Forecasts (ECMWF)
Source: www.ecmwf.int
License: CC BY 4.0 and ECMWF Terms of Use (<https://apps.ecmwf.int/datasets/terms/general/>)
Created at 2023-11-14T09:46:48.970Z



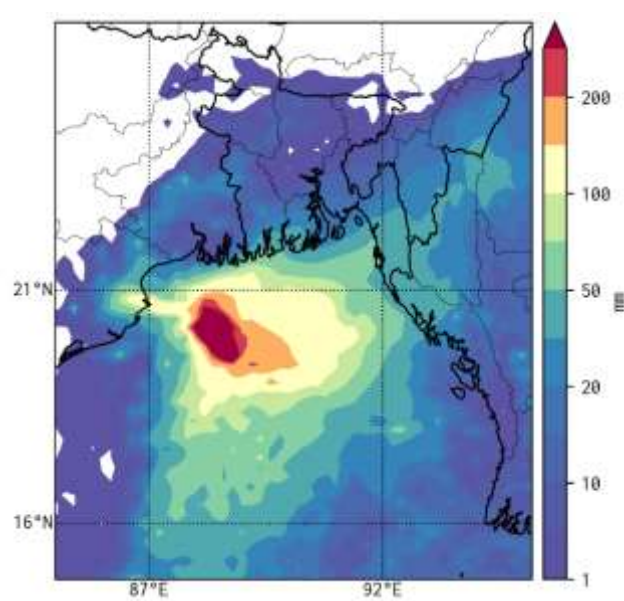
This update is prepared as a forecast guidance by [Regional Integrated Multi-Hazard Early Warning System \(RIMES\)](#) in collaboration with Bangladesh Meteorological Department. Visit www.bmd.gov.bd for bulletins.

Rainfall Forecast of ECMWF based on 14th November 2023

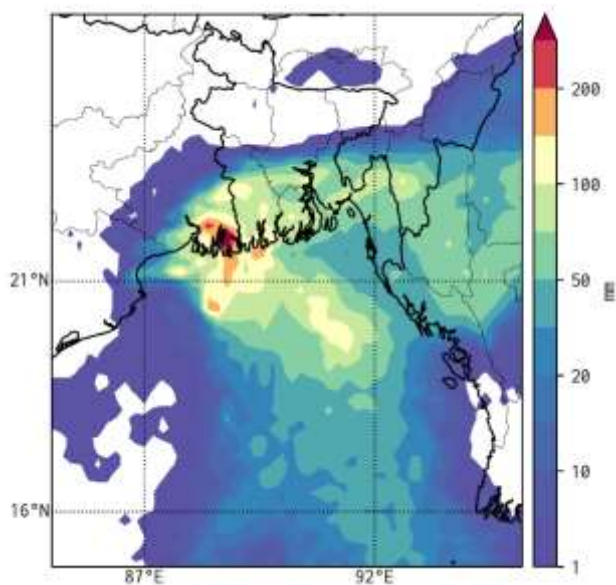
Accumulated Rainfall of November 15, 2023
(ECMWF)



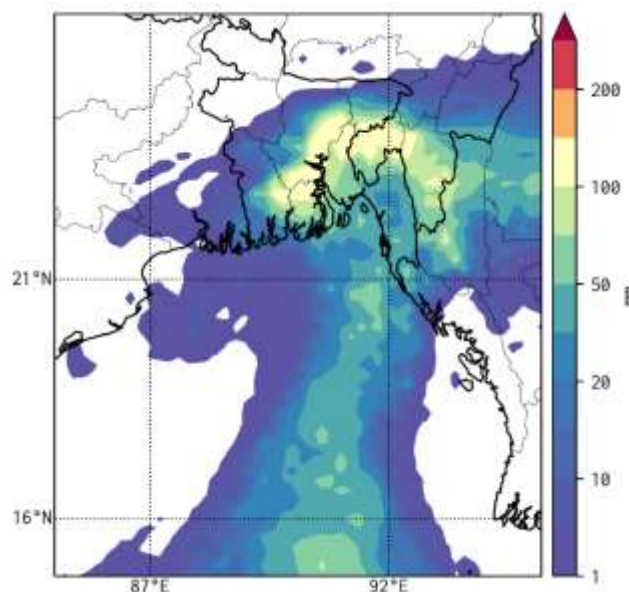
Accumulated Rainfall of November 16, 2023
(ECMWF)



Accumulated Rainfall of November 17, 2023
(ECMWF)



Accumulated Rainfall of November 18, 2023
(ECMWF)



Important Note

This situation update is prepared to help humanitarian workers better interpret severe weather forecasts. The document is intended for specific groups only, NOT for public dissemination. **This is not a Warning Bulletin!** To access the Special Weather Bulletins of BMD, click [here](#).

Data Sources

Bangladesh Meteorological Department (BMD), Regional Specialized Meteorological Center (RSMC), Indian Meteorological Department (IMD), Joint Typhoon Warning Center (JTWC), European Center for Medium-Range Weather Forecast (ECMWF), Joint Research Center – (JRC-EU)

This update is prepared as a forecast guidance by [Regional Integrated Multi-Hazard Early Warning System](#) (RIMES) in collaboration with Bangladesh Meteorological Department. Visit www.bmd.gov.bd for bulletins.