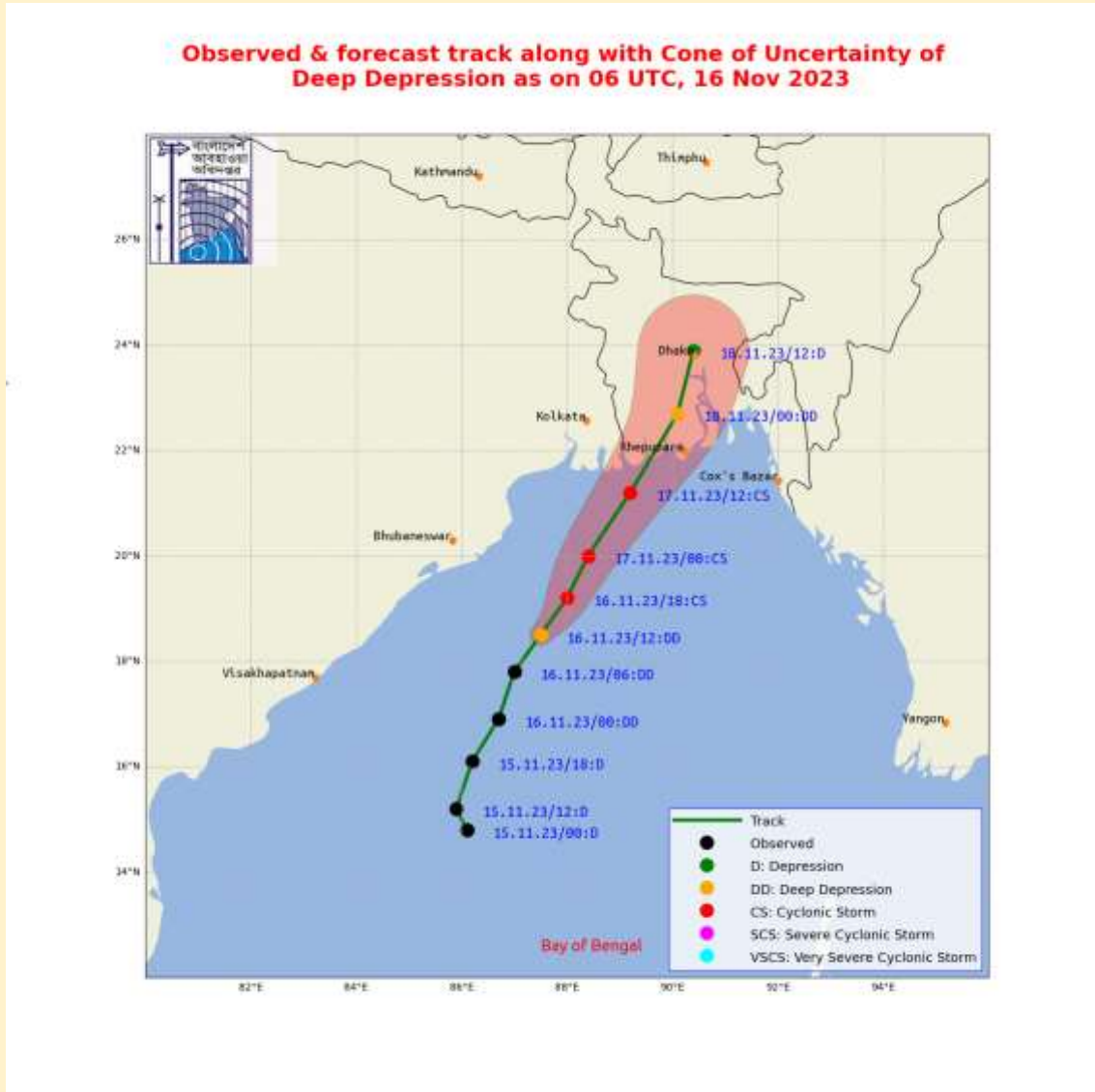


BANGLADESH SEVERE WEATHER SITUATION UPDATE

Published on November 16, 2023 18:00 BST (+06:00 UTC)

Situation Overview (Deep Depression)

- According to the Bangladesh Meteorological Department (BMD) (16 November 2023 1200 BST), the Deep Depression over the West Central Bay and adjoining area moved Northwestwards over the same region (near Lat 17.8°N, Lon 87.0°E). The center was about 725km southwest of Chattogram port, 685km Southwest of Cox's Bazar port, 595km Southwest of Mongla port, and 590km Southwest of Payra port at 12 noon today (16th November 2023). It is likely to intensify and move Northeastwards further.
- It is likely to continue to move north-northeastwards, intensify further, and cross the Bangladesh coast



between Mongla and Khepupara with a wind speed of 55-65 kmh gusting to 75 kmh around the morning of 18th November 2023.

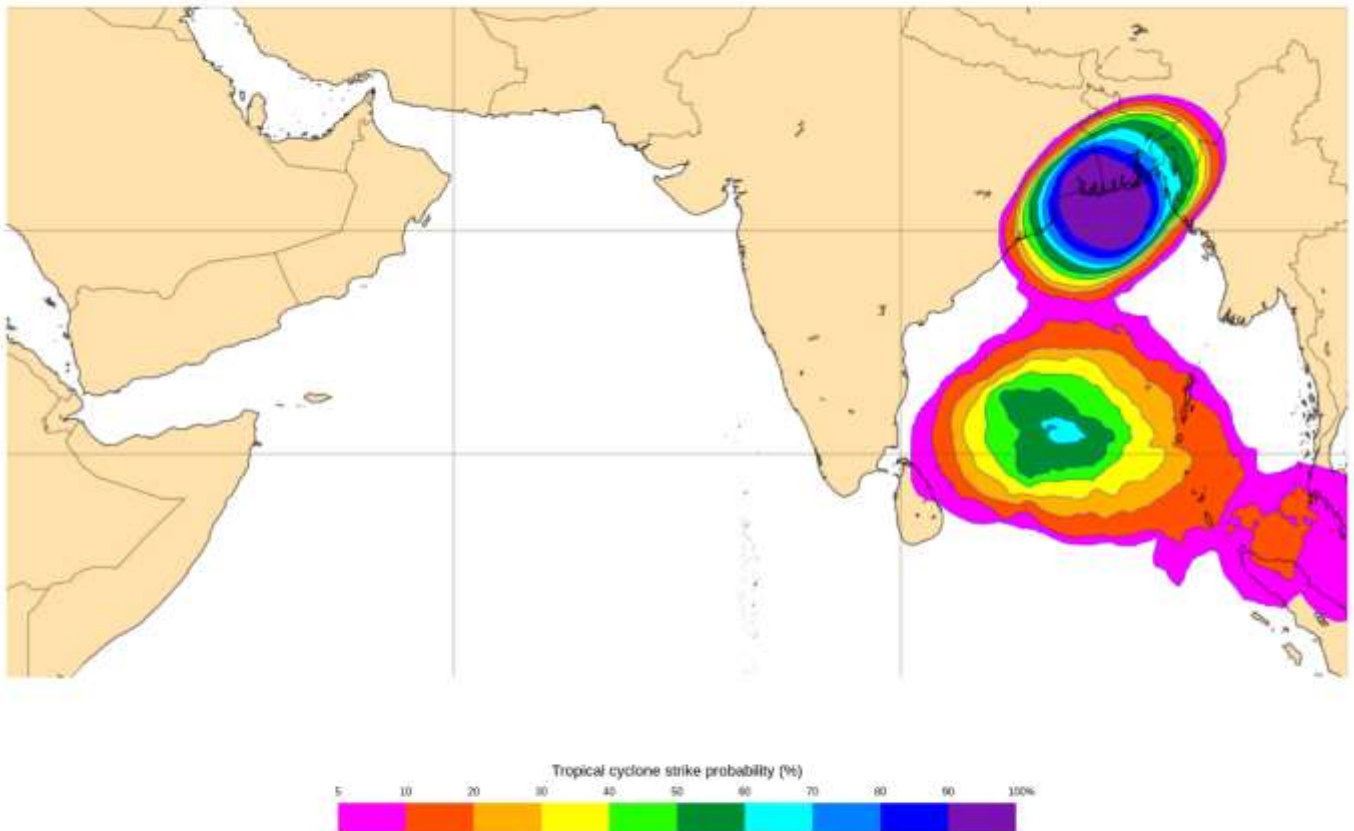
- Under the peripheral effect of the Deep Depression, heavy (44-88mm) to very heavy (more than 89mm) rainfall with gusty/squally wind may occur over the North Bay and their offshore islands and chars and coastal areas of Bangladesh.
- Maximum sustained wind speed within 48km of the center of deep depression is about 50kmh rising to 60 kmh in gusts/squalls. The sea will remain moderate near the center of the deep depression center.

This update is prepared as a forecast guidance by [Regional Integrated Multi-Hazard Early Warning System \(RIMES\)](#) in collaboration with Bangladesh Meteorological Department. Visit www.bmd.gov.bd for bulletins.

- Maritime ports of Chattogram, Cox's Bazar Mongla, and Payra have been advised to keep hoisted local cautionary Signal No distant cautionary Signal No. Three (R) Three. According to BMD, all fishing boats and trawlers over North Bay and the deep sea have been advised to take shelter immediately.
- According to the ECMWF's forecast, there is a 50-60% likelihood of strike on the Odisha-West Bengal coast and an 80-90% possibility for the West Bengal and adjoining Khulna division of Bangladesh within the next 48 hours. However, the system's intensity in transforming into a cyclone and the landfall location remains uncertain and may change over time.

Tropical cyclone activity (Including genesis)

Base time: Wed 15 Nov 2023 12 UTC Valid time: Sun 19 Nov 2023 12 UTC (+96h) Area : Northern Indian Ocean Intensity : Tropical cyclones

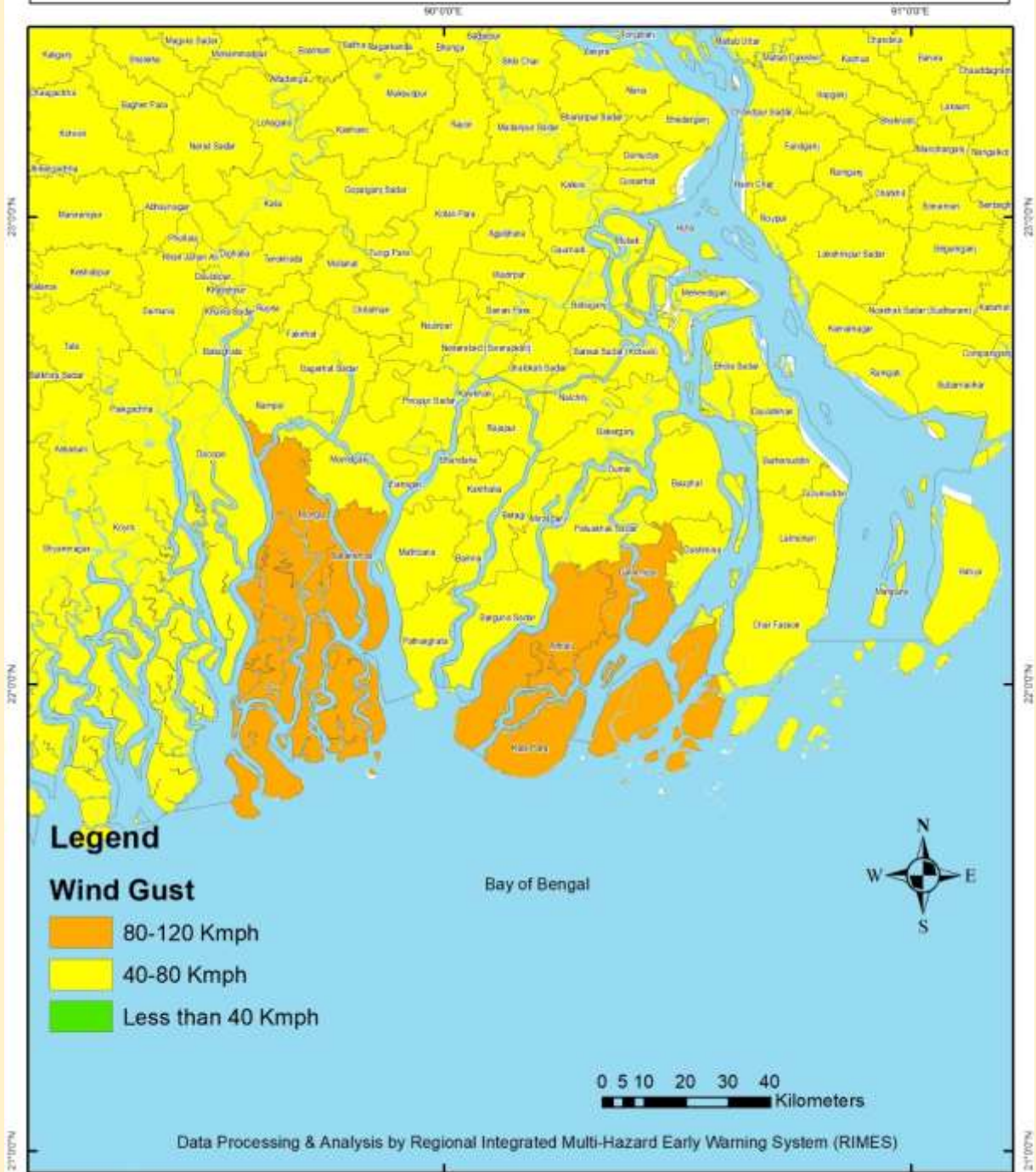


© 2023 European Centre for Medium-Range Weather Forecasts (ECMWF)
 Source: www.ecmwf.int
 License: CC BY 4.0 and ECMWF Terms of Use (<https://apps.ecmwf.int/datasets/terms/general/>)
 Created at 2023-11-18T05:47:38.888Z



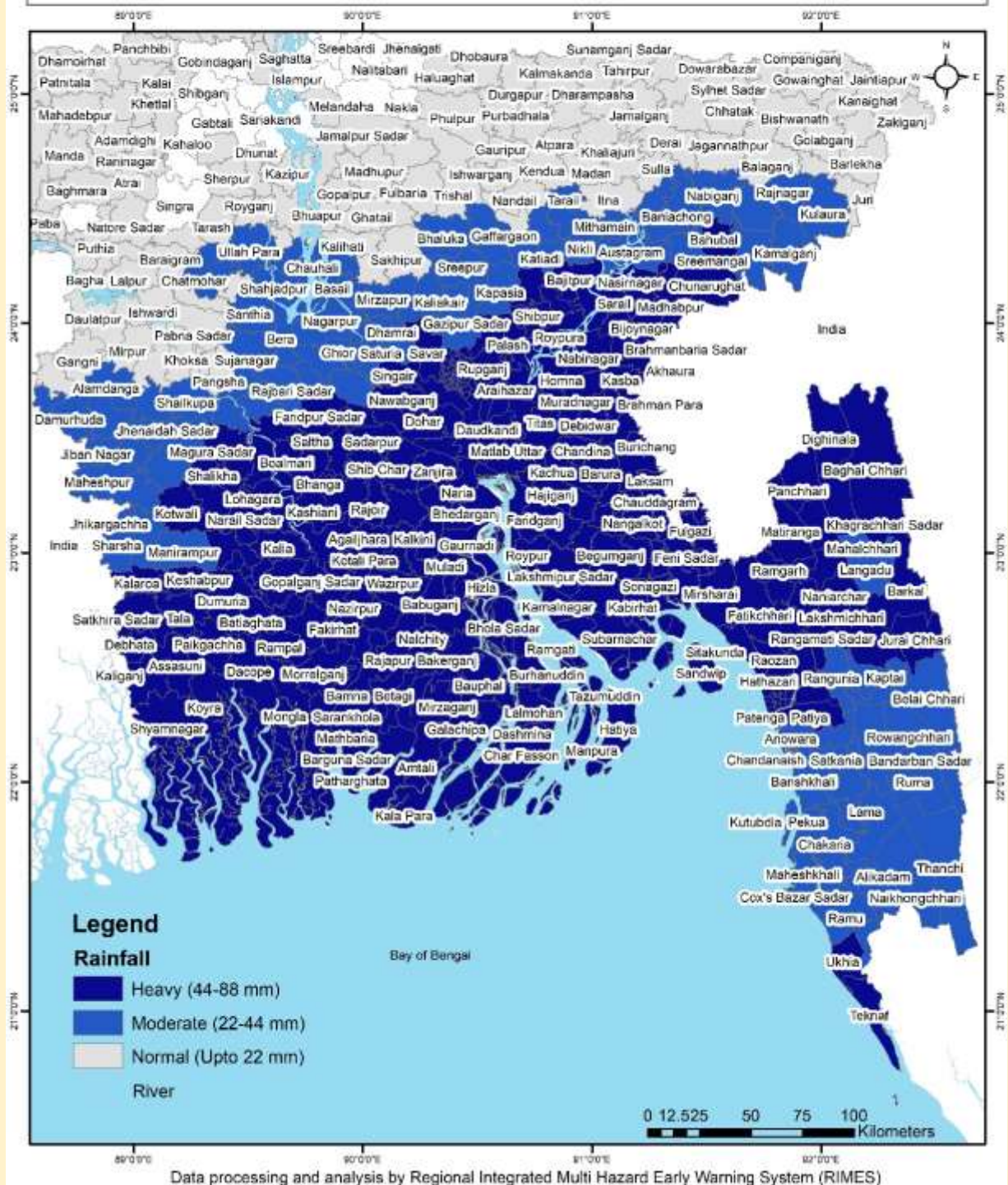
This update is prepared as a forecast guidance by [Regional Integrated Multi-Hazard Early Warning System \(RIMES\)](#) in collaboration with Bangladesh Meteorological Department. Visit www.bmd.gov.bd for bulletins.

Wind Gust forecast for 18 November 2023 during the passage of Deep Depression based on ECMWF forecast as of 16 November 2023



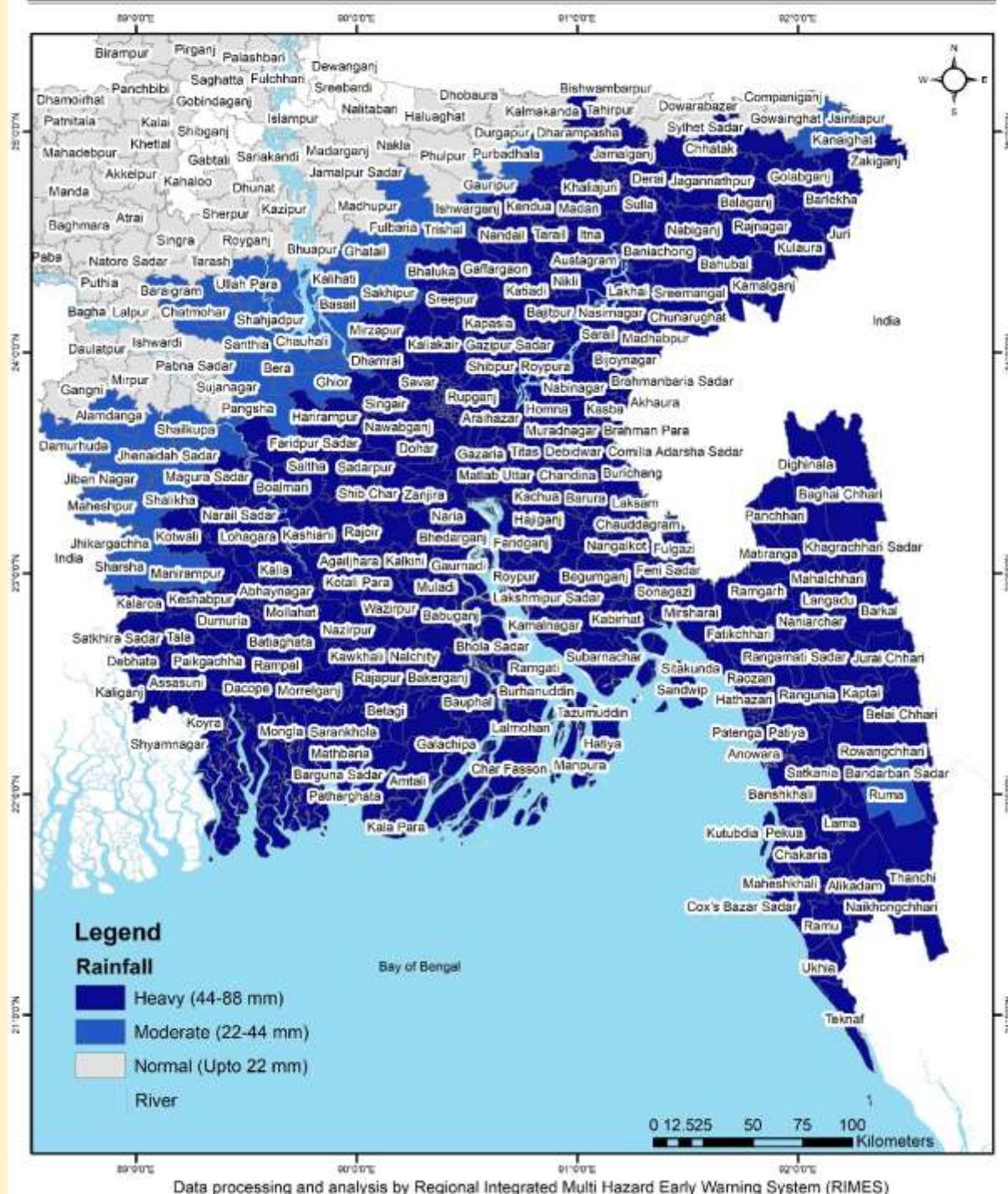
This update is prepared as a forecast guidance by [Regional Integrated Multi-Hazard Early Warning System \(RIMES\)](#) in collaboration with Bangladesh Meteorological Department. Visit www.bmd.gov.bd for bulletins.

24 hr Acc Rainfall forecast during the passage of Deep Depression based on ECMWF forecast as of 16 November 2023



This update is prepared as a forecast guidance by [Regional Integrated Multi-Hazard Early Warning System \(RIMES\)](https://www.rimes.gov.bd/) in collaboration with Bangladesh Meteorological Department. Visit www.bmd.gov.bd for bulletins.

48 hr Acc Rainfall forecast during the passage of Deep Depression based on ECMWF forecast as of 16 November 2023



Important Note

This situation update is prepared to help humanitarian workers better interpret severe weather forecasts. The document is intended for specific groups only, NOT for public dissemination. **This is not a Warning Bulletin!** To access the Special Weather Bulletins of BMD, click [here](#).

Data Sources

Bangladesh Meteorological Department (BMD), Regional Specialized Meteorological Center (RSMC), Indian Meteorological Department (IMD), Joint Typhoon Warning Center (JTWC), European Center for Medium-Range Weather Forecast (ECMWF), Joint Research Center – (JRC-EU)

This update is prepared as a forecast guidance by [Regional Integrated Multi-Hazard Early Warning System \(RIMES\)](#) in collaboration with Bangladesh Meteorological Department. Visit www.bmd.gov.bd for bulletins.