

## BANGLADESH SEVERE WEATHER SITUATION UPDATE

Published on November 17, 2023 12:00 BST (+06:00 UTC)

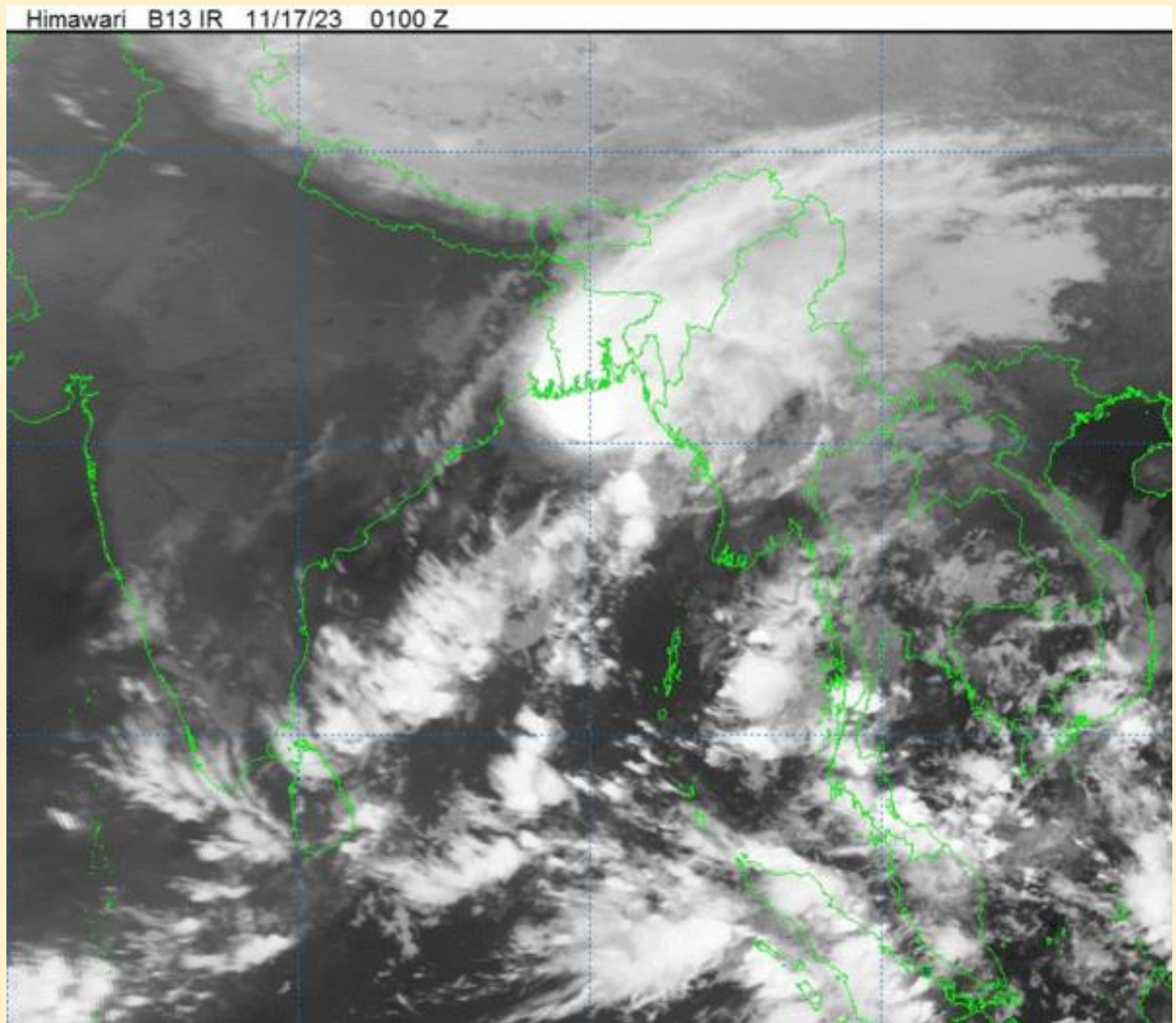
### Situation Overview (Cyclonic Storm “Midhili”)

- According to the Bangladesh Meteorological Department (BMD) (17 November 2023 0900 BST), the Cyclonic Storm “Midhili” over the Northwest Bay and adjoining area moved North-Northeastwards over the region (near Lat 20.3°N, Lon 88.6°E). The centre was about 415km southwest of Chattogram port, 395km Southwest of Cox’s Bazar port, 265km Southwest of Mongla port, and 270km Southwest of Payra port at 09 AM today (17<sup>th</sup> November 2023). It is likely to move North-Northeastwards and may cross the Mongla and Payra coast near Khepupara by evening today. The periphery of the cyclone may start crossing the coast by noon today (17<sup>th</sup> November 2023).



- Maximum sustained wind speed within 54 km of the centre of the cyclone is about 62kmh rising to 88 kmh in gusts/squalls. The sea will remain very rough near the cyclone centre.
- Under the peripheral effect of the Cyclonic, heavy (44-88mm) to very heavy (more than 89mm) rainfall with gusty/squally wind may persist over the North Bay and their offshore islands and chars and coastal areas of Bangladesh.

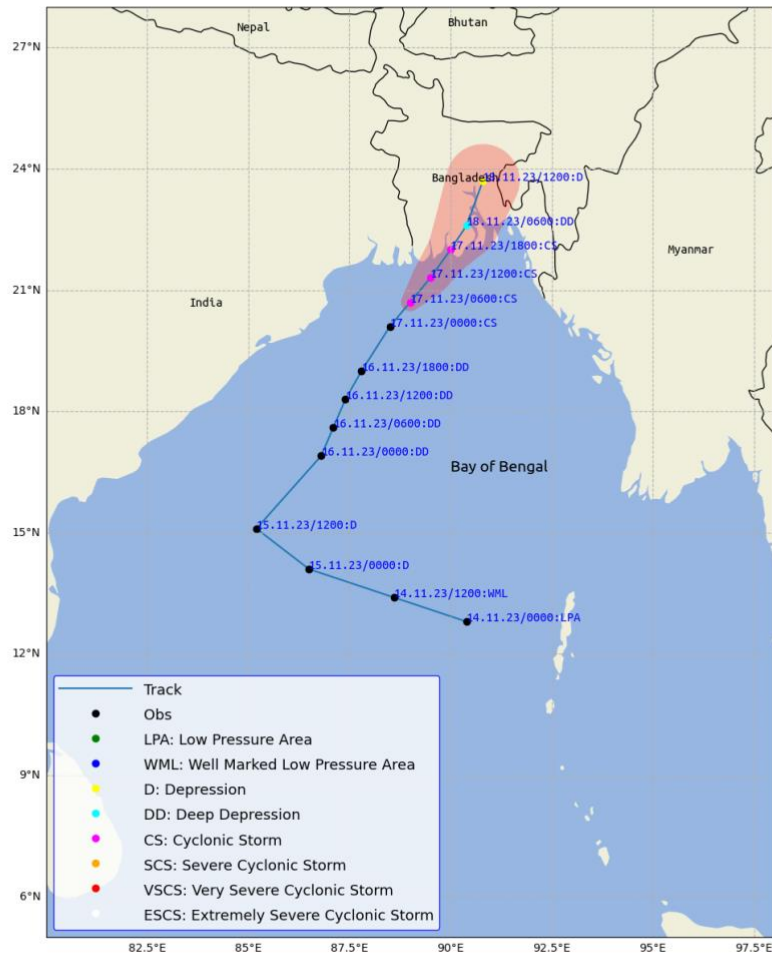
This update is prepared as a forecast guidance by [Regional Integrated Multi-Hazard Early Warning System \(RIMES\)](#) in collaboration with Bangladesh Meteorological Department. Visit [www.bmd.gov.bd](http://www.bmd.gov.bd) for bulletins.



- Maritime ports of Mongla, and Payra have been advised to lower local warning number four but instead of hoist **Danger Signal No. Seven (R) Seven**. Maritime ports of Chattogram and Cox's Bazar have been advised to lower local warning Signal No. Four but instead of hoist **Danger Signal No. Six (R) Six**.
- Under the peripheral effect of the Cyclonic Storm, heavy (44-88mm) to very heavy (more than 89mm) rainfall with gusty/squally wind may persist over the North Bay and their offshore islands and chars and coastal areas of Bangladesh.
- Under the peripheral effect of the Cyclone and steep pressure gradient, the low-lying areas of the coastal districts of Cox's Bazar, Chattogram, Noakhali, Laxmipur, Feni, Borguna, Bhola, Patuakhali, Bagerhat, Khulna, Satkhira and other offshore islands and char areas are likely to inundated by wind-driven surge of 3-5 feet height above normal astronomical tide.
- According to BMD, all fishing boats and trawlers over North Bay and the deep sea have been advised to remain shelter till further notice.

*This update is prepared as a forecast guidance by [Regional Integrated Multi-Hazard Early Warning System \(RIMES\)](#) in collaboration with Bangladesh Meteorological Department. Visit [www.bmd.gov.bd](http://www.bmd.gov.bd) for bulletins.*

**Observed and Forecast Track along with CoU of cyclone "Midhili"  
as on 17 Nov 2023 9am BST,**



**Important Note**

This situation update is prepared to help humanitarian workers better interpret severe weather forecasts. The document is intended for specific groups only, NOT for public dissemination. **This is not a Warning Bulletin!** To access the Special Weather Bulletins of BMD, click [here](#).

**Data Sources**

Bangladesh Meteorological Department (BMD), Regional Specialized Meteorological Center (RSMC), Indian Meteorological Department (IMD), Joint Typhoon Warning Center (JTWC), European Center for Medium-Range Weather Forecast (ECMWF), Joint Research Center – (JRC-EU)

This update is prepared as a forecast guidance by [Regional Integrated Multi-Hazard Early Warning System \(RIMES\)](#) in collaboration with Bangladesh Meteorological Department. Visit [www.bmd.gov.bd](http://www.bmd.gov.bd) for bulletins.