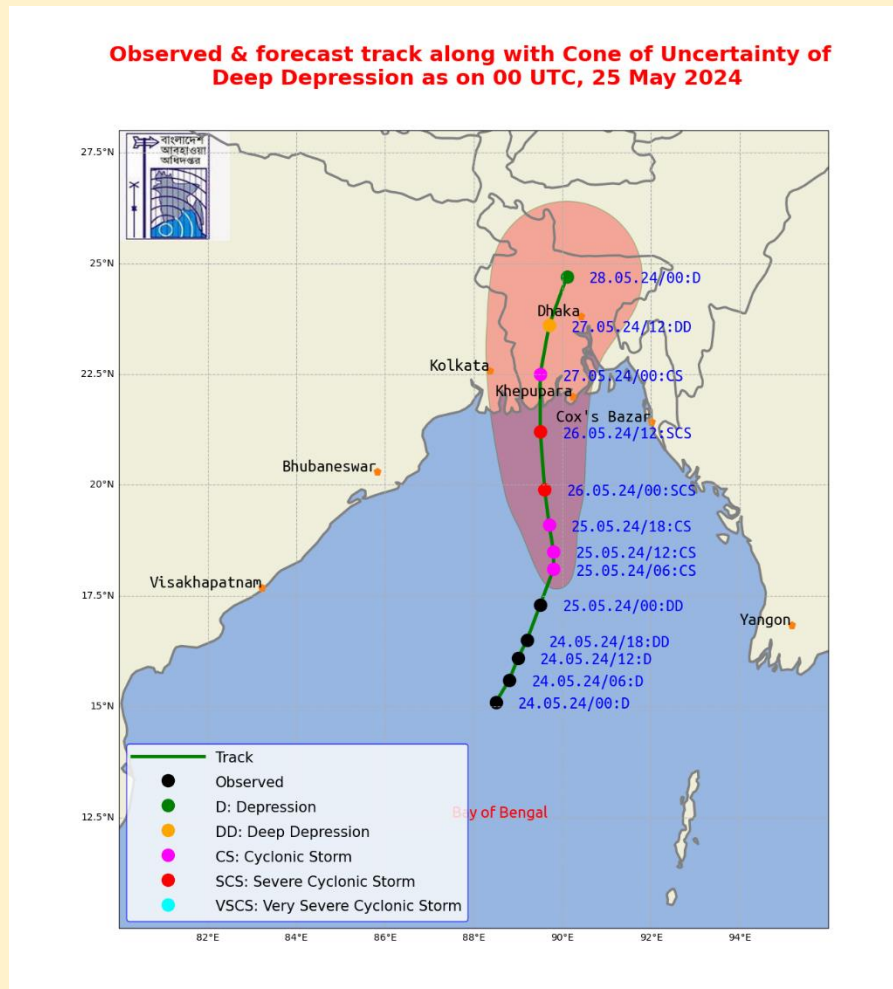


BANGLADESH SEVERE WEATHER SITUATION UPDATE

Published on May 25, 2024 09:00 BST (+06:00 UTC)

Situation Overview (Depression)

- According to the Bangladesh Meteorological Department (BMD) (25 May 2024 09:00 BST), the Deep Depression over East central Bay and adjoining West central Bay moved North-Northeastwards over the same area (Near Lat: 17.6°N & Lon: 89.7°E) and was centred at 09 AM today (25 May 2024) is about 565 km Southwest of Chattogram Port and 490 km South of Payra Port. It is likely to intensify and move Northeastwards further.

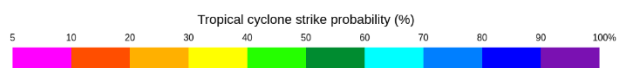
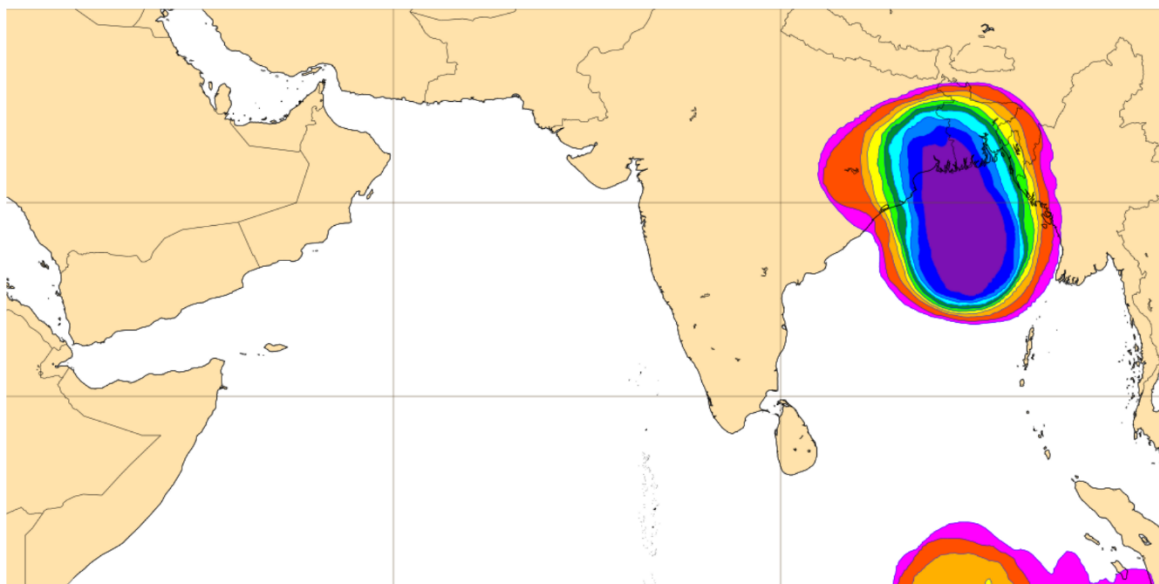


- Maximum sustained wind speed within 48 kms of the Deep Depression Centre is about 50 kph rising to 60 kph in gusts/squalls. Sea will remain moderate near the Deep Depression Centre.
- According to BMD, Maritime ports of Chattogram, Cox's Bazar, Mongla and Payra have been advised to keep hoisted distant cautionary **Signal No. One (R) One**. All fishing boats and trawlers over North Bay and Deep Sea have been advised to remain close to the coast and proceed with caution till further notice. They are also advised not to venture into the deep sea.
- According to the ECMWF's forecast, there is 80-90% likelihood of strike on the West Bengal and adjoining Khulna division of Bangladesh within the next 72 hours. However, the system's intensity in transforming into a cyclone and the landfall location remains uncertain and may change over time.

This update is prepared as a forecast guidance by [Regional Integrated Multi-Hazard Early Warning System \(RIMES\)](#) in collaboration with Bangladesh Meteorological Department. Visit www.bmd.gov.bd for bulletins.

Tropical cyclone activity (Including genesis)

Base time: Fri 24 May 2024 00 UTC Valid time: Mon 27 May 2024 00 UTC (+72h) Area : Northern Indian Ocean Intensity : Tropical cyclones

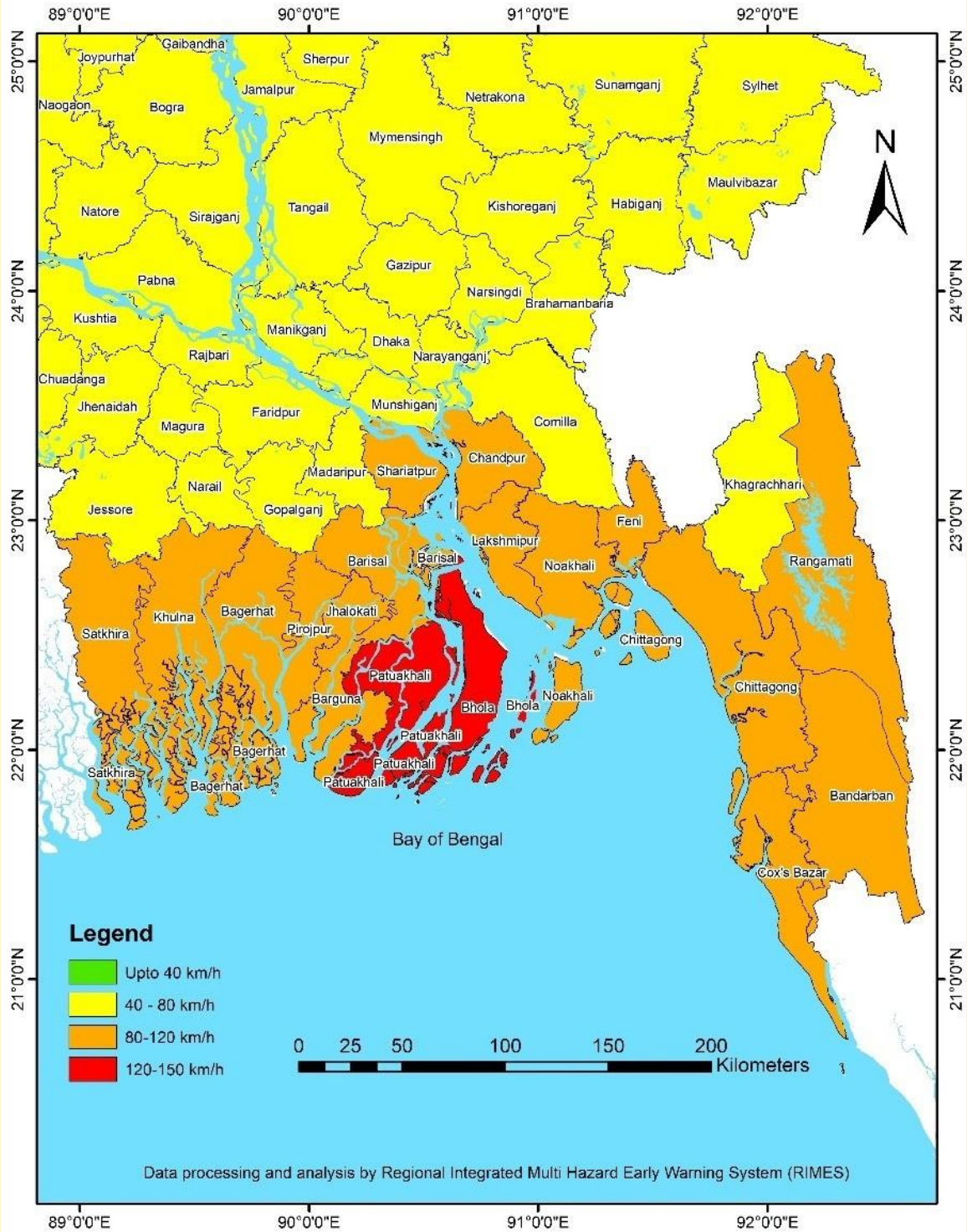


© 2024 European Centre for Medium-Range Weather Forecasts (ECMWF)
Source: www.ecmwf.int
Licence: CC BY 4.0 and ECMWF Terms of Use (<https://apps.ecmwf.int/datasets/licences/general/>)
Created at 2024-05-24T06:05:38.070Z

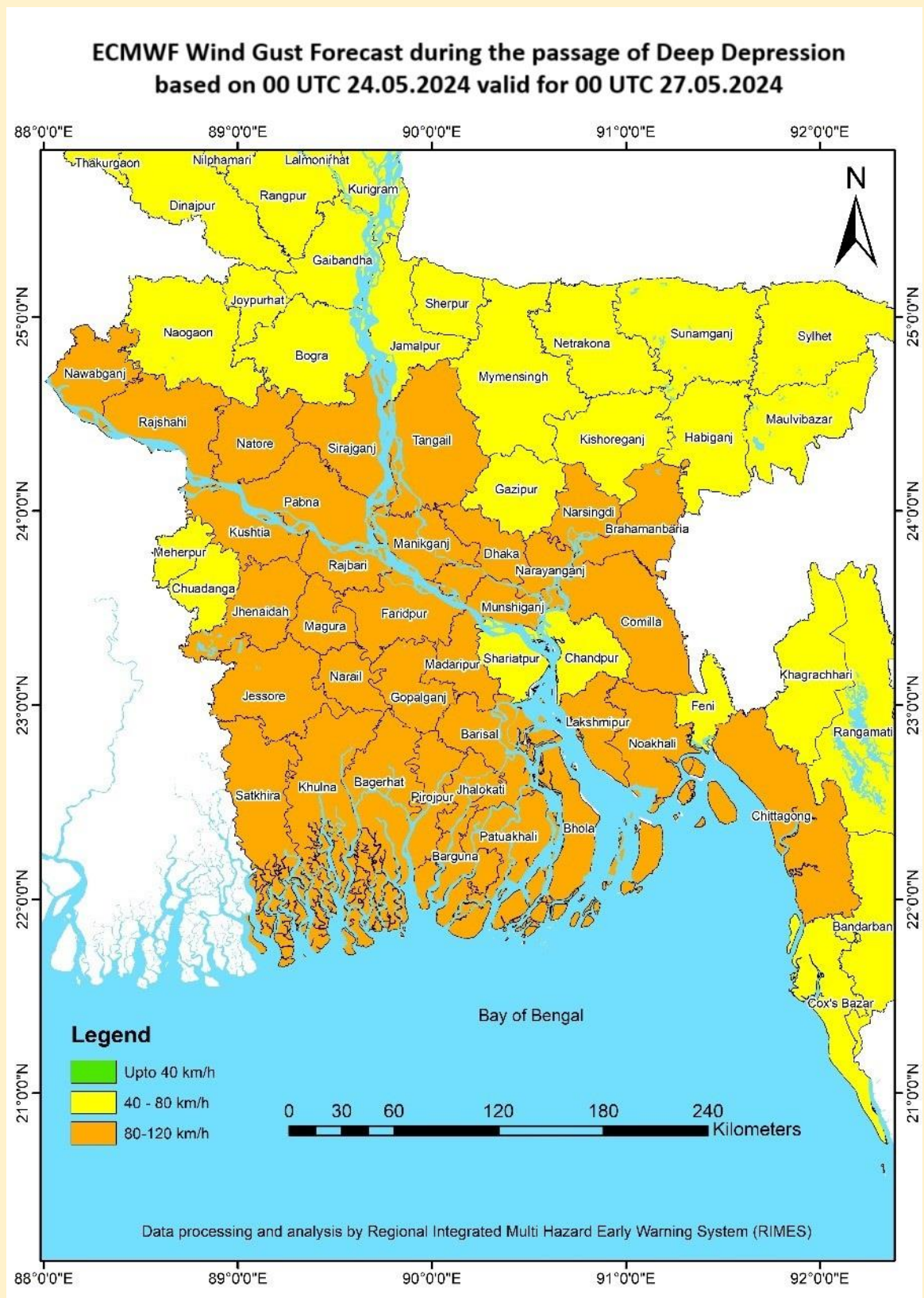


This update is prepared as a forecast guidance by [Regional Integrated Multi-Hazard Early Warning System \(RIMES\)](#) in collaboration with Bangladesh Meteorological Department. Visit www.bmd.gov.bd for bulletins.

**ECMWF Wind Gust Forecast during the passage of Deep Depression
based on 00 UTC 24.05.2024 valid for 00 UTC 26.05.2024**

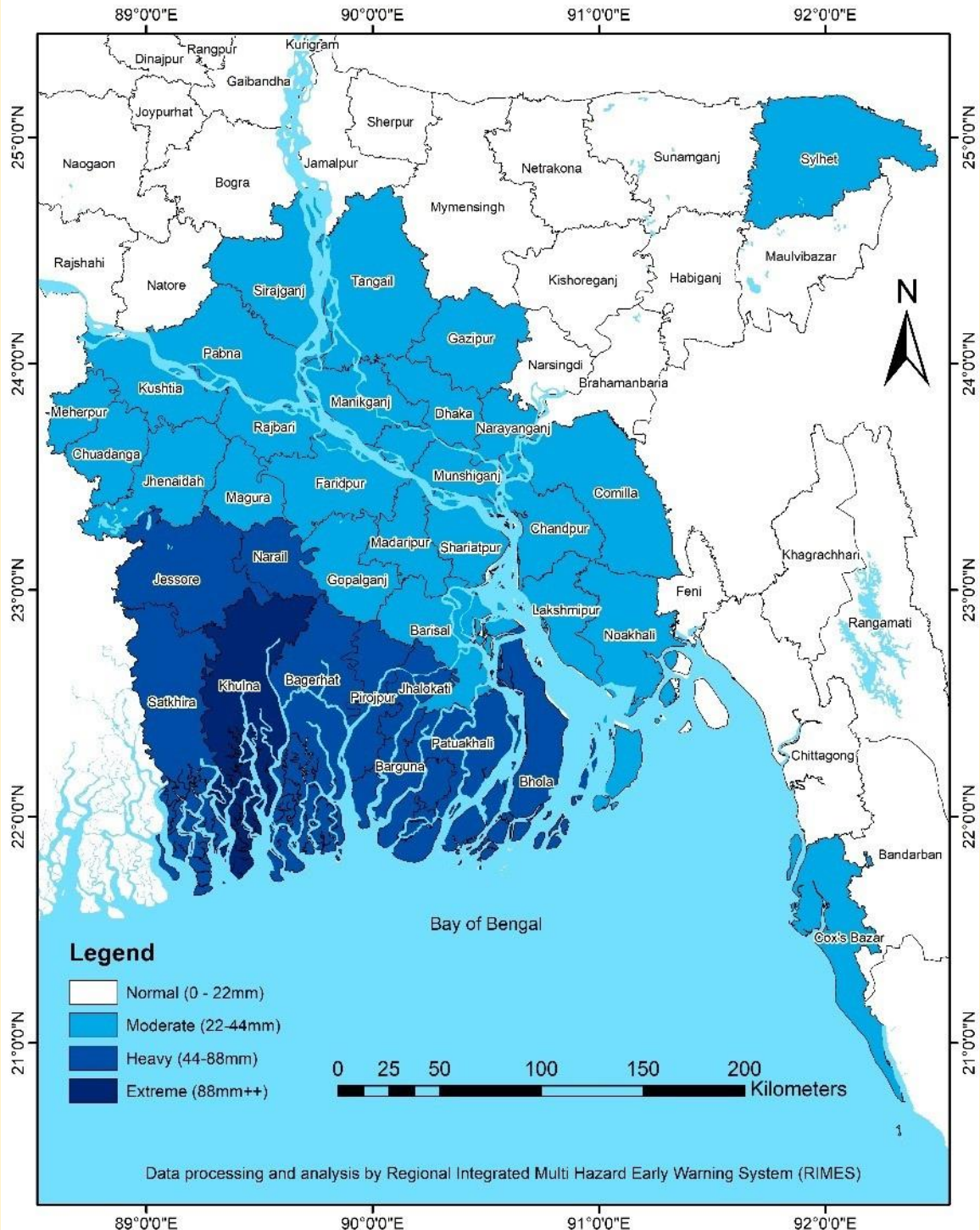


This update is prepared as a forecast guidance by [Regional Integrated Multi-Hazard Early Warning System \(RIMES\)](#) in collaboration with Bangladesh Meteorological Department. Visit www.bmd.gov.bd for bulletins.



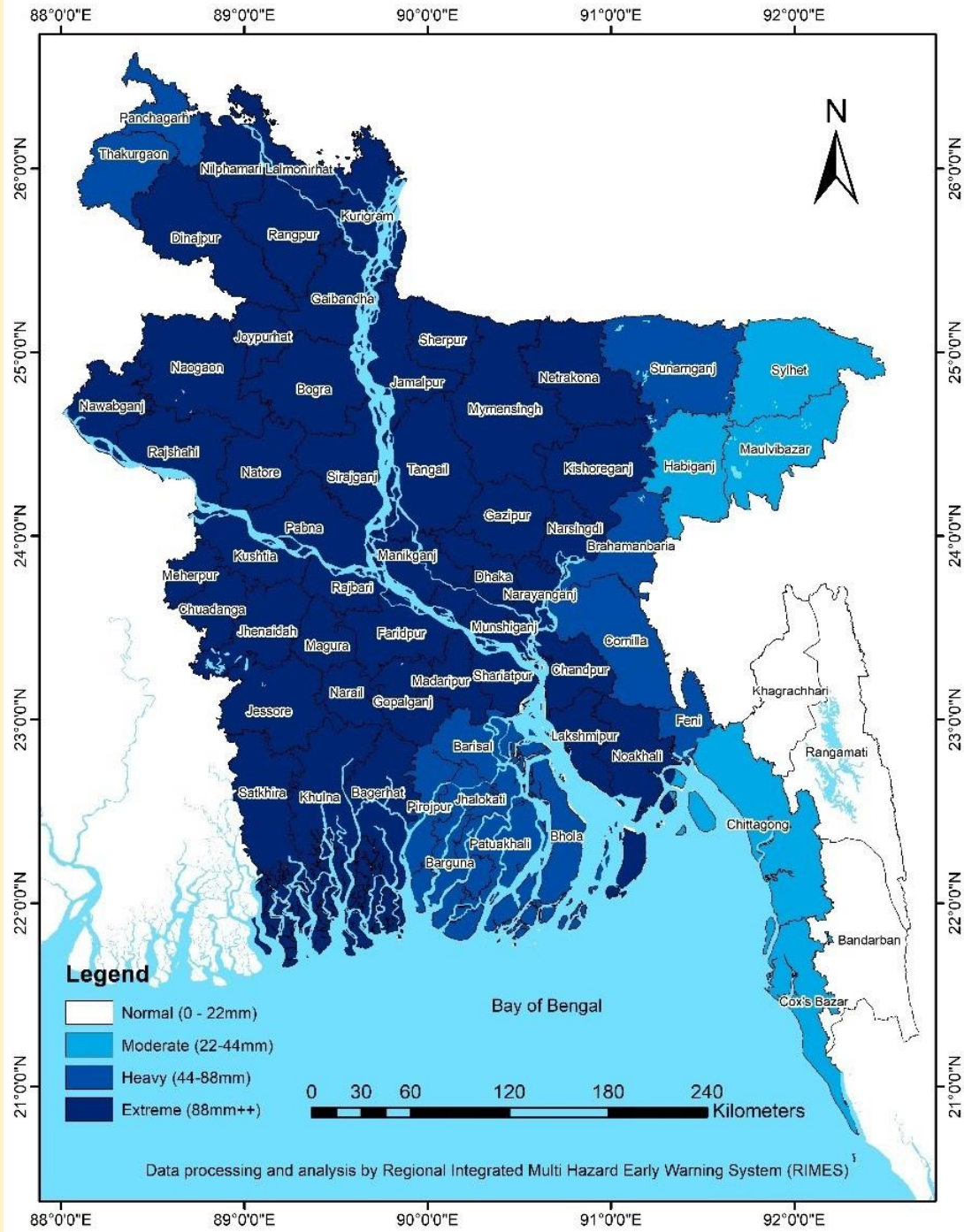
This update is prepared as a forecast guidance by [Regional Integrated Multi-Hazard Early Warning System \(RIMES\)](#) in collaboration with Bangladesh Meteorological Department. Visit www.bmd.gov.bd for bulletins.

ECMWF Accumulated Rainfall Forecast during the passage of Deep Depression based on 00 UTC 24.05.2024 valid for 00 UTC 26.05.2024

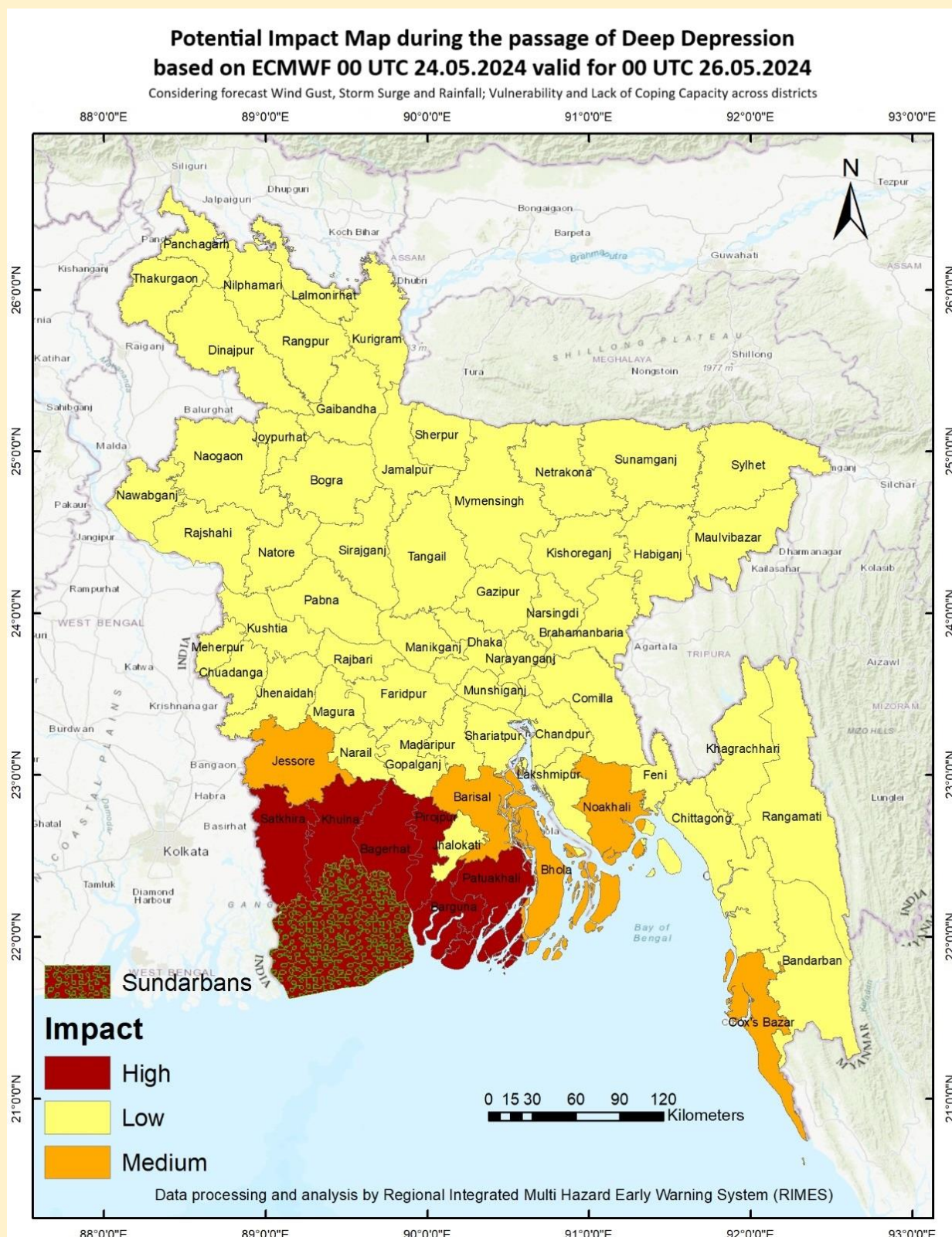


This update is prepared as a forecast guidance by [Regional Integrated Multi-Hazard Early Warning System \(RIMES\)](https://www.rimes.gov.bd/) in collaboration with Bangladesh Meteorological Department. Visit www.bmd.gov.bd for bulletins.

ECMWF Accumulated Rainfall Forecast during the passage of Deep Depression based on 00 UTC 24.05.2024 valid for 00 UTC 27.05.2024



This update is prepared as a forecast guidance by [Regional Integrated Multi-Hazard Early Warning System \(RIMES\)](https://www.rimes.gov.bd/) in collaboration with Bangladesh Meteorological Department. Visit www.bmd.gov.bd for bulletins.



This update is prepared as a forecast guidance by [Regional Integrated Multi-Hazard Early Warning System \(RIMES\)](#) in collaboration with Bangladesh Meteorological Department. Visit www.bmd.gov.bd for bulletins.

Important Note

This situation update is prepared to help humanitarian workers better interpret severe weather forecasts. The document is intended for specific groups only, NOT for public dissemination. **This is not a Warning Bulletin!** To access the Special Weather Bulletins of BMD, click [here](#).

Data Sources

Bangladesh Meteorological Department (BMD), Regional Specialized Meteorological Center (RSMC), Indian Meteorological Department (IMD), Joint Typhoon Warning Center (JTWC), European Center for Medium-Range Weather Forecast (ECMWF), Joint Research Center – (JRC-EU)