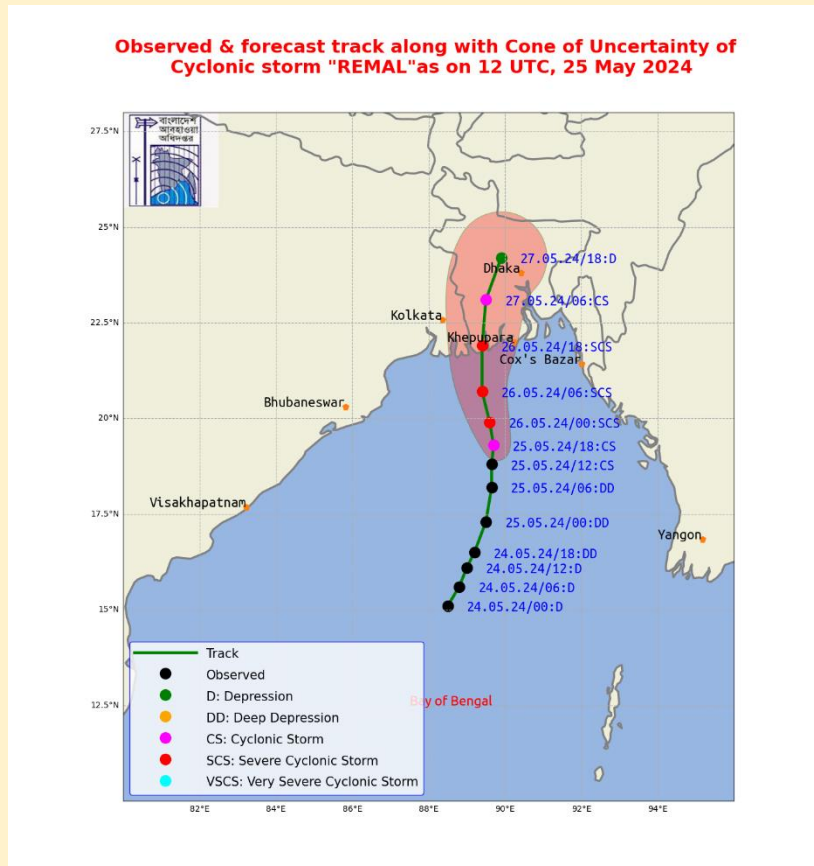


## BANGLADESH SEVERE WEATHER SITUATION UPDATE

Published on May 25, 2024 21:00 BST (+06:00 UTC)

### Situation Overview (Cyclonic Storm 'REMAL')

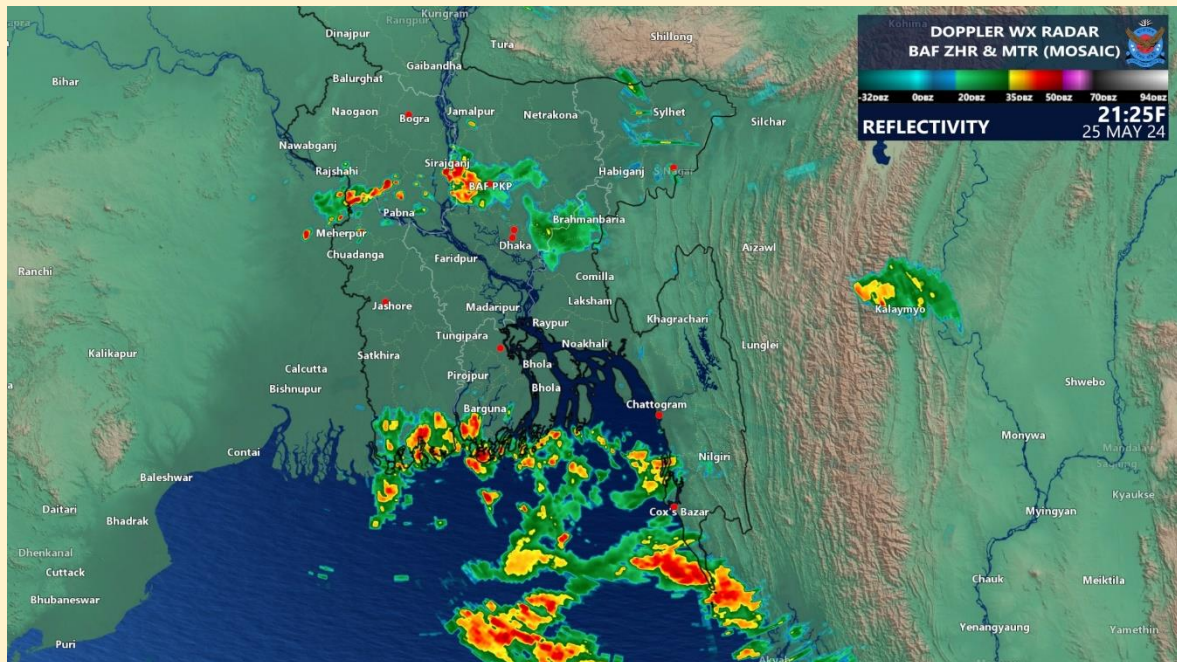
- According to the Bangladesh Meteorological Department (BMD) (25 May 2024 20:00 BST), the Deep Depression over East central Bay and adjoining West central Bay moved Northwards, intensified into a Cyclonic Storm "Remal" over Northwest Bay and adjoining area (Near Lat: 18.8°N & Lon: 89.5°E) and was centred at 06 PM today (25 May 2024) is about 455 km Southwest of Chattogram Port, 400 km Southwest of Cox's Bazar Port, 405 km South of Mongla Port and 365 km South of Payra Port. It is likely to intensify and move Northwards.



- Maximum sustained wind speed within 54 km of the Cyclone Centre is about 62 kph rising to 88 kph in gusts/squalls. Sea will remain very rough near the Cyclone Centre.
- According to BMD, Maritime ports of Payra and Mongla have been advised to lower cautionary Signal No. Three but instead of hoist **Danger Signal No. Seven (R) Seven**. Maritime ports of Chattogram and Cox's Bazar have been advised to lower cautionary Signal No. Three but instead of hoist **Danger Signal No. Six (R) Six**.
- Under the peripheral effect of the Cyclonic Storm, **heavy (44-88 mm)** to **very heavy ( $\geq 89$  mm)** rainfall with gusty/squally wind persists over North Bay, their offshore islands chars and coastal areas of Bangladesh.
- Under the peripheral effect of the Cyclone and steep pressure gradient, the low-lying areas of the coastal districts of Satkhira, Khulna, Bagerhat, Pirojpur, Jhalokathi, Borguna, Bhola, Patuakhali, Barishal, Noakhali, Laxmipur, Feni, Cumilla, Chattogram, Cox's Bazar, and their offshore islands and chars are likely to be inundated by wind driven surge of **3-5 feet** height above normal astronomic tide.

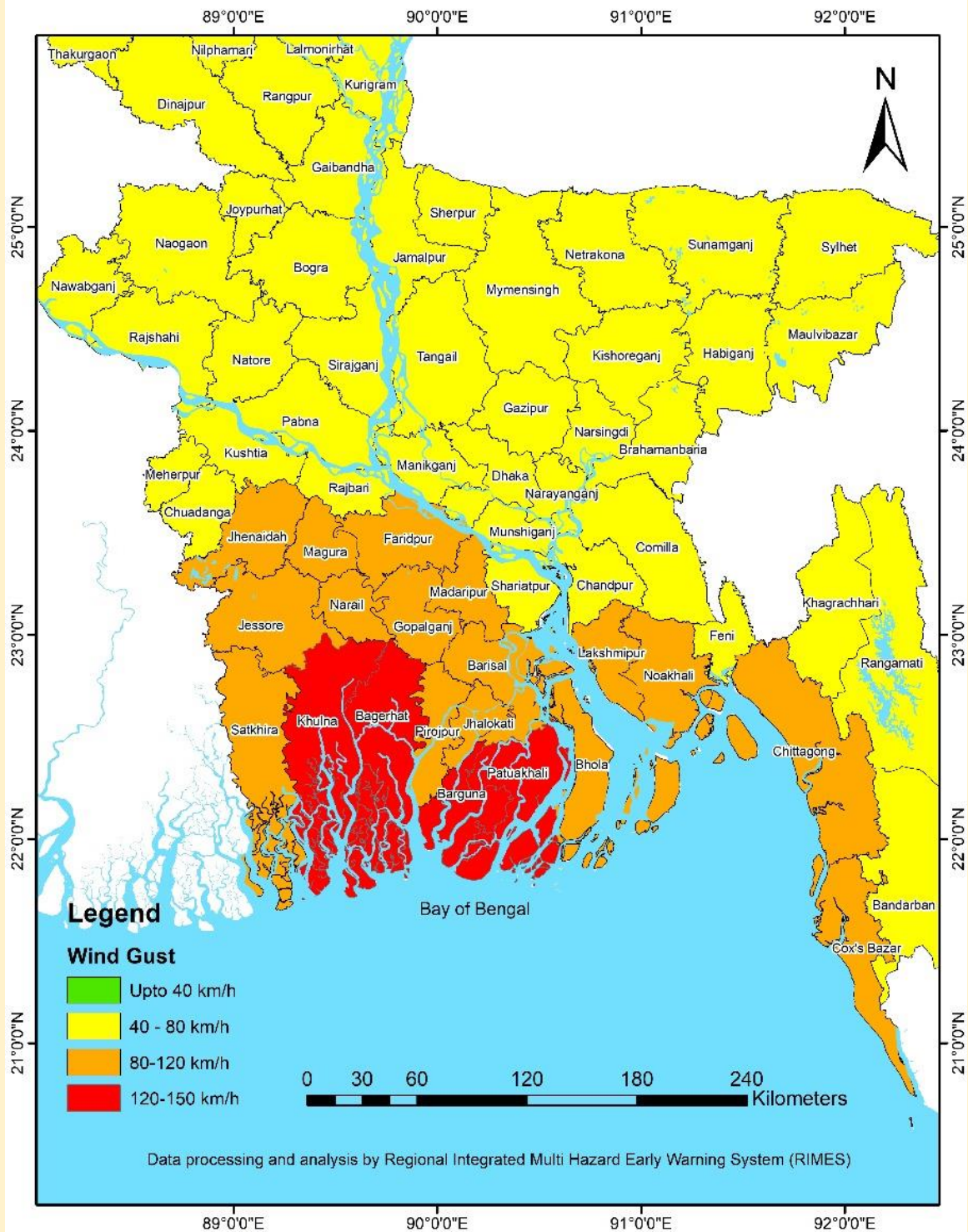
This update is prepared as a forecast guidance by [Regional Integrated Multi-Hazard Early Warning System \(RIMES\)](#) in collaboration with Bangladesh Meteorological Department. Visit [www.bmd.gov.bd](http://www.bmd.gov.bd) for bulletins.

- Under the influence of the Cyclone Rajshahi, Rangpur, Mymensingh, Dhaka, Khulna, Barishal, Chattogram, and Sylhet division are likely to be experienced of **heavy rainfall (44-88 mm)** to **very heavy rainfall ( $\geq 89$  mm)** with gusty/squally wind.
- All fishing boats and trawlers over North Bay and Deep Sea have been advised to remain in shelter.



This update is prepared as a forecast guidance by [Regional Integrated Multi-Hazard Early Warning System \(RIMES\)](#) in collaboration with Bangladesh Meteorological Department. Visit [www.bmd.gov.bd](http://www.bmd.gov.bd) for bulletins.

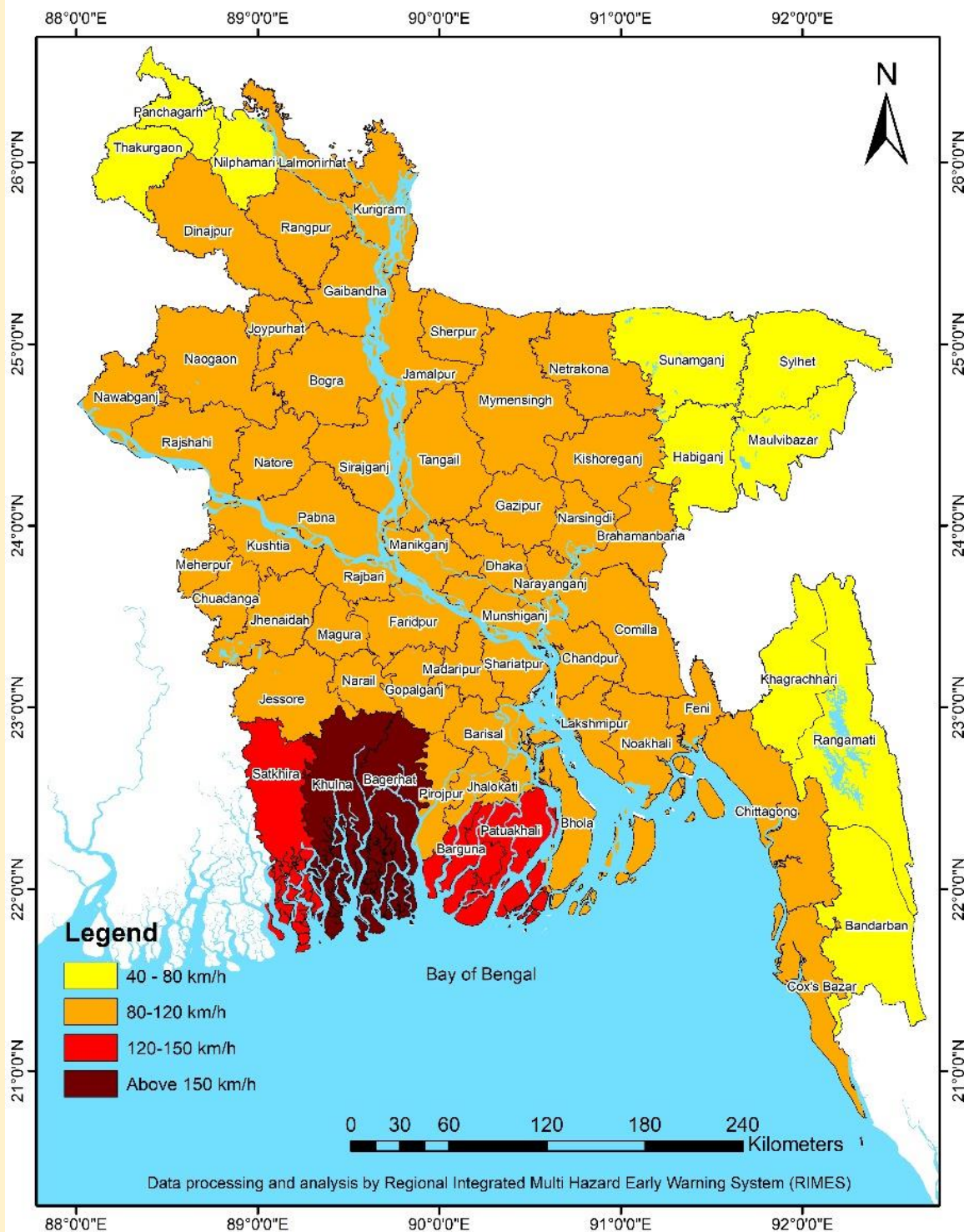
**ECMWF Wind Gust Forecast during the passage of Cyclone 'Remal'  
based on 00 UTC 25.05.2024 valid for 00 UTC 26.05.2024**



This update is prepared as a forecast guidance by [Regional Integrated Multi-Hazard Early Warning System \(RIMES\)](#) in collaboration with Bangladesh Meteorological Department. Visit [www.bmd.gov.bd](http://www.bmd.gov.bd) for bulletins.

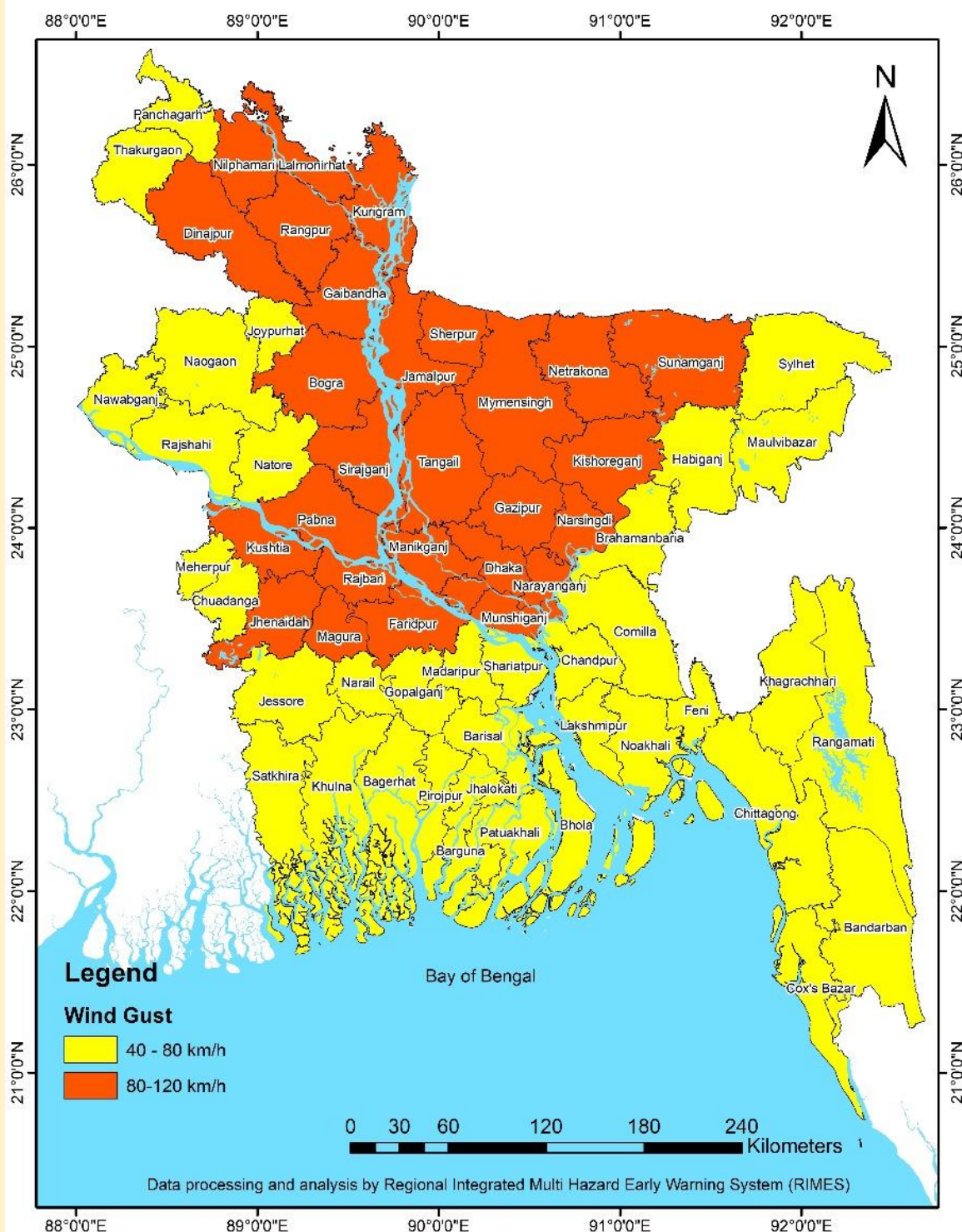


# ECMWF Wind Gust Forecast during the passage of Cyclone 'Remal' based on 00 UTC 25.05.2024 valid for 00 UTC 27.05.2024



This update is prepared as a forecast guidance by [Regional Integrated Multi-Hazard Early Warning System \(RIMES\)](#) in collaboration with Bangladesh Meteorological Department. Visit [www.bmd.gov.bd](http://www.bmd.gov.bd) for bulletins.

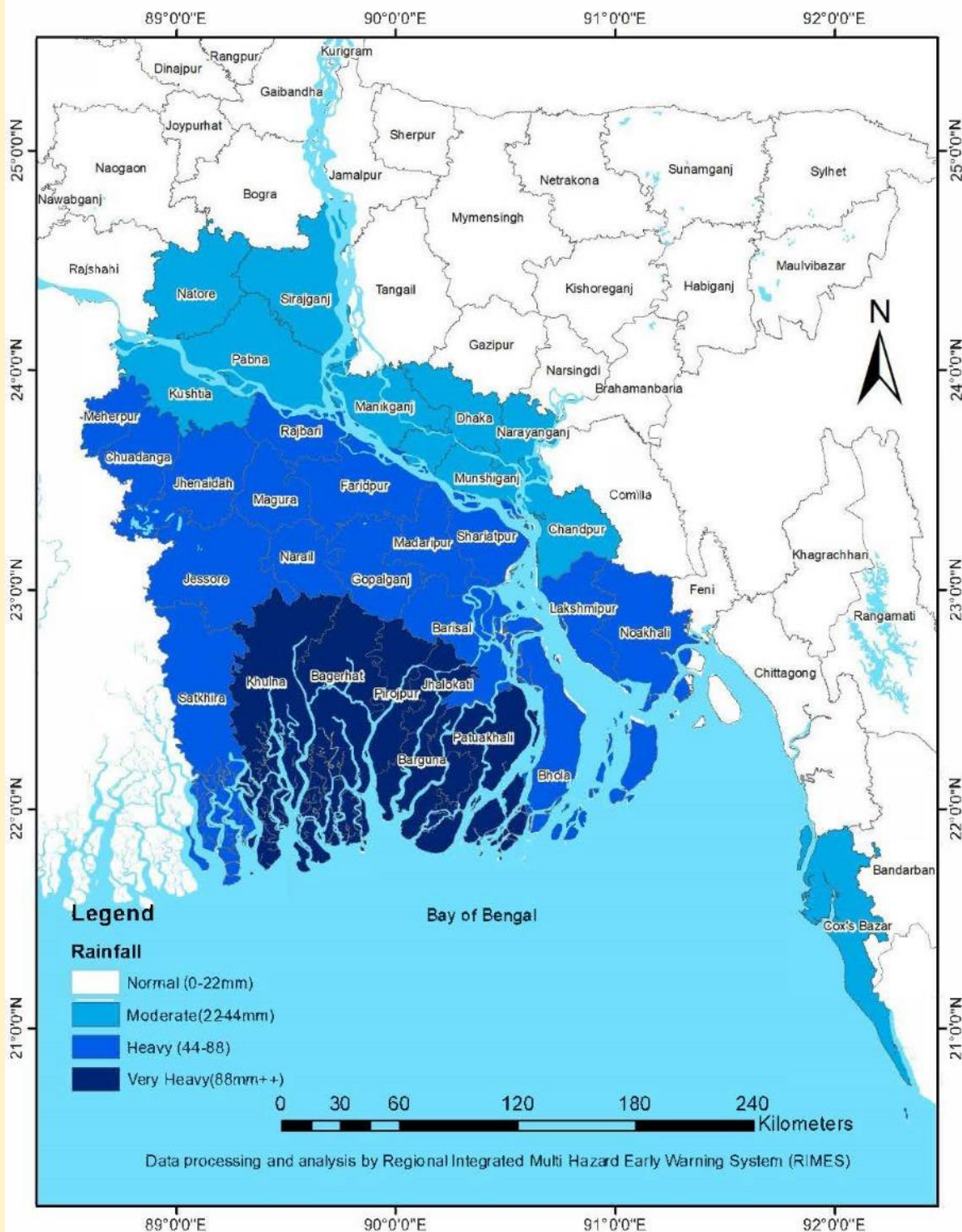
**ECMWF Wind Gust Forecast during the passage of Cyclone 'Remal'  
based on 00 UTC 25.05.2024 valid for 00 UTC 28.05.2024**



This update is prepared as a forecast guidance by [Regional Integrated Multi-Hazard Early Warning System \(RIMES\)](#) in collaboration with Bangladesh Meteorological Department. Visit [www.bmd.gov.bd](http://www.bmd.gov.bd) for bulletins.

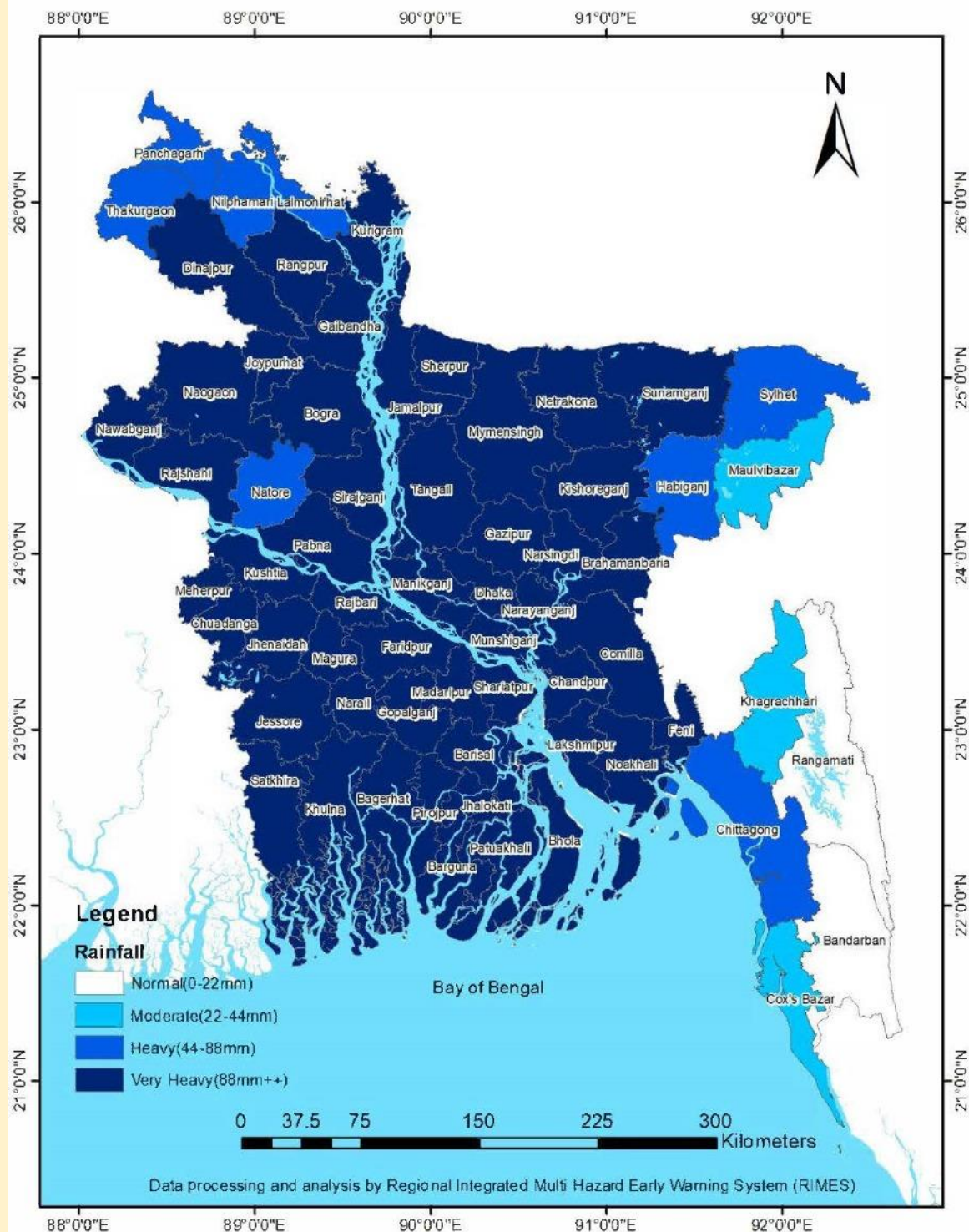


ECMWF Daily Accumulated Rainfall Forecast during the passage of Cyclone "Remal" based on 00 UTC 25.05.2024 valid for 00 UTC 26.05.2024



This update is prepared as a forecast guidance by [Regional Integrated Multi-Hazard Early Warning System \(RIMES\)](#) in collaboration with Bangladesh Meteorological Department. Visit [www.bmd.gov.bd](http://www.bmd.gov.bd) for bulletins.

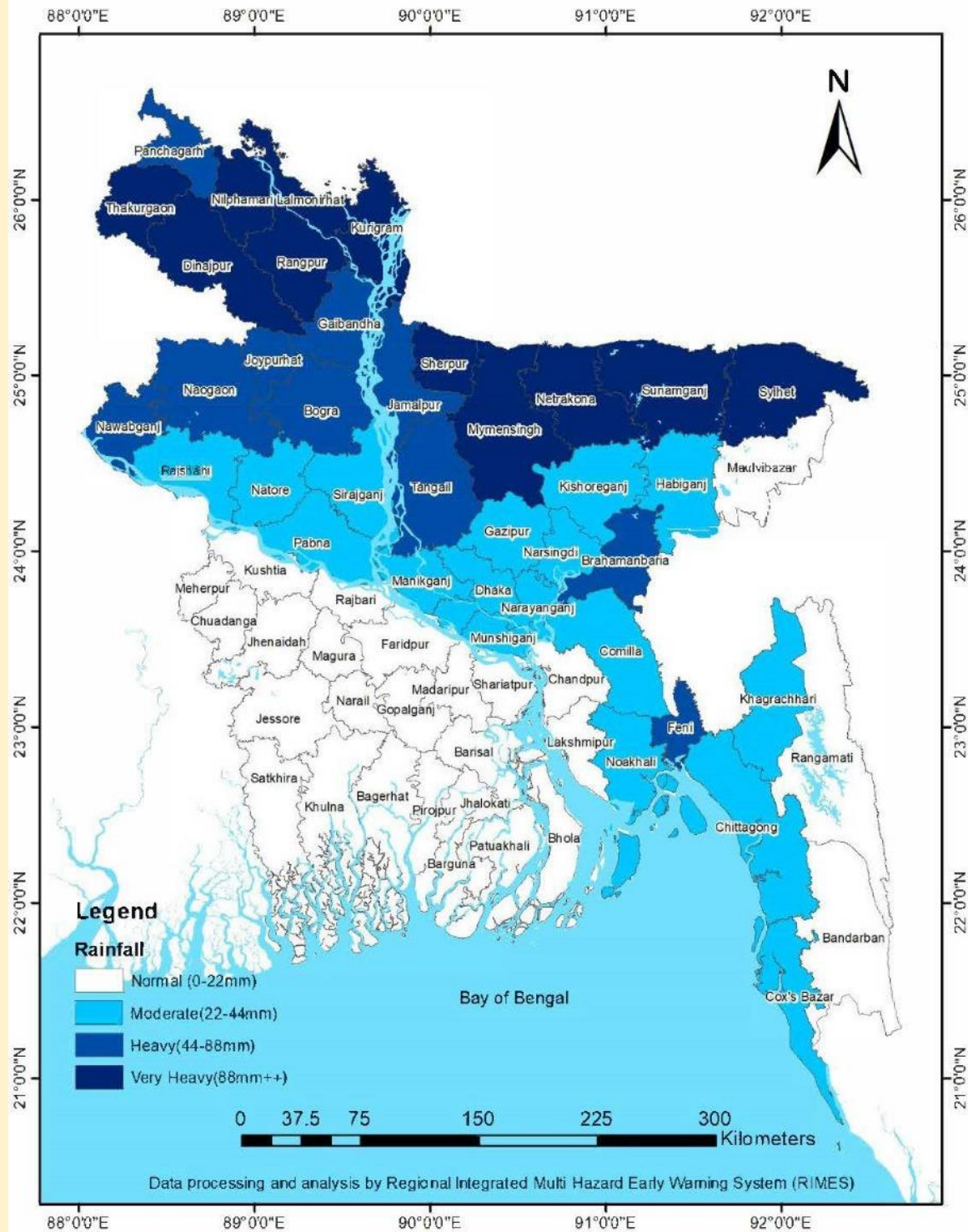
ECMWF Daily Accumulated Rainfall Forecast during the passage of  
Cyclone "Remal" based on 00 UTC 25.05.2024 valid for 00 UTC 27.05.2024



This update is prepared as a forecast guidance by [Regional Integrated Multi-Hazard Early Warning System \(RIMES\)](https://www.rimes.gov.bd/) in collaboration with Bangladesh Meteorological Department. Visit [www.bmd.gov.bd](https://www.bmd.gov.bd/) for bulletins.



ECMWF Daily Accumulated Rainfall Forecast during the passage of  
Cyclone "Remal" based on 00 UTC 25.05.2024 valid for 00 UTC 28.05.2024

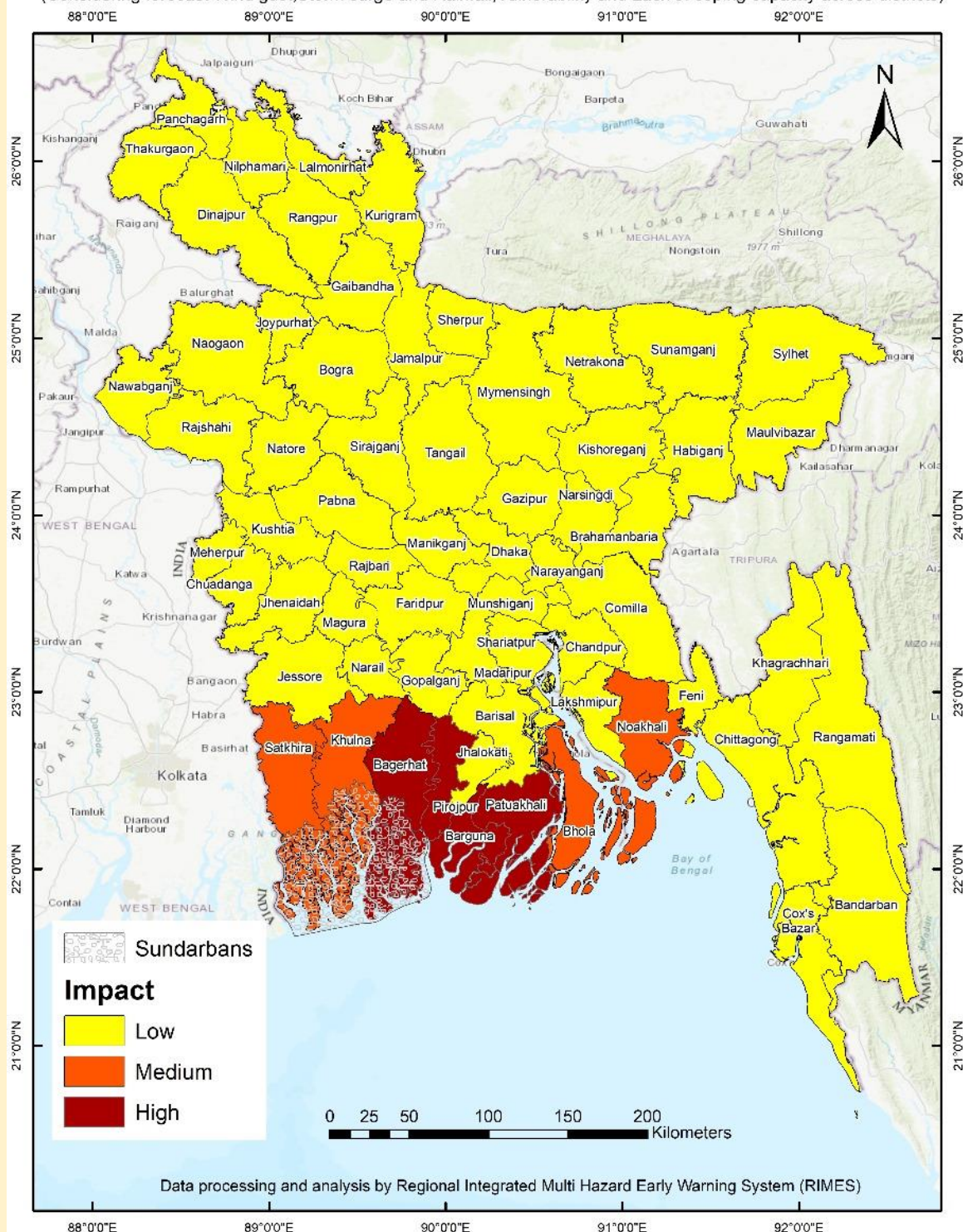


This update is prepared as a forecast guidance by [Regional Integrated Multi-Hazard Early Warning System \(RIMES\)](https://www.rimes.gov.bd/) in collaboration with Bangladesh Meteorological Department. Visit [www.bmd.gov.bd](https://www.bmd.gov.bd/) for bulletins.



## Potential Impact Map during the passage of Deep Depression based on ECMWF 00 UTC 25.05.2024 valid for 00 UTC 26.05.2024

(Considering forecast Wind gust, Storm surge and Rainfall; Vulnerability and Lack of coping capacity across districts)



### Important Note

This update is prepared as a forecast guidance by [Regional Integrated Multi-Hazard Early Warning System \(RIMES\)](#) in collaboration with Bangladesh Meteorological Department. Visit [www.bmd.gov.bd](http://www.bmd.gov.bd) for bulletins.

This situation update is prepared to help humanitarian workers better interpret severe weather forecasts. The document is intended for specific groups only, NOT for public dissemination. **This is not a Warning Bulletin!** To access the Special Weather Bulletins of BMD, click [here](#).

#### **Data Sources**

Bangladesh Meteorological Department (BMD), Regional Specialized Meteorological Center (RSMC), Indian Meteorological Department (IMD), Joint Typhoon Warning Center (JTWC), European Center for Medium-Range Weather Forecast (ECMWF), Joint Research Center – (JRC-EU)