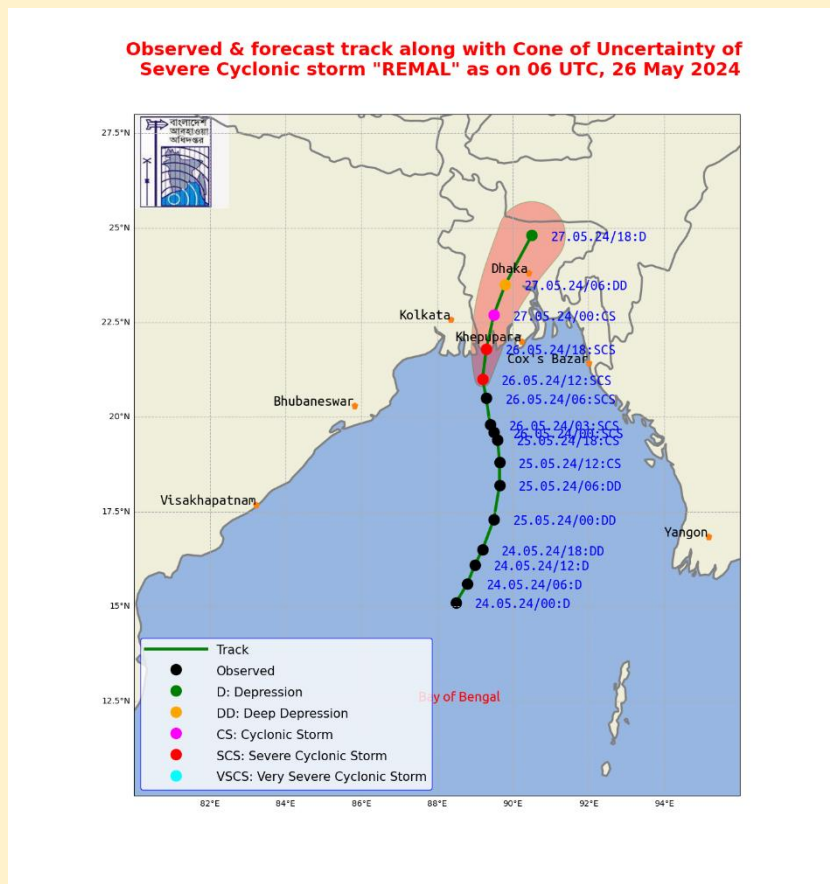


## BANGLADESH SEVERE WEATHER SITUATION UPDATE

Published on May 26, 2024 18:30 BST (+06:00 UTC)

### Situation Overview (Cyclone ‘REMAL’)

- According to the Bangladesh Meteorological Department (BMD) (26 May 2024 18:00 BST), the Severe Cyclonic Storm “Remal” over Northwest Bay and adjoining area moved Northwards over the same area (Near Lat: 20.7°N & Lon: 89.3°E) and was centred at 03 PM today (26 May 2024) is about 325 km Southwest of Chattogram Port, 310 km Southwest of Cox’s Bazar Port, 200 km South of Mongla Port and 180 km South of Payra Port. Under the peripheral effect of the severe cyclone gusty/squally wind with rain is continuing over coastal regions of Bangladesh. It is likely to move in a Northerly direction and **may cross Sagar Island (West Bengal) – Khepuapara coast near Mongla by 3-4 hours from 06 PM today (26 May 2024)**. After crossing the centre of severe cyclonic storm, rest part of the system may continue to cross.



- Maximum sustained wind speed within 64 km of the Severe Cyclone Centre is about 90 kph rising to 120 kph in gusts/squalls. Sea will remain high near the Severe Cyclone Centre.
- Maritime ports of Payra and Mongla have been advised to keep hoisted **Great Danger Signal No. Ten (R) Ten**.
- Coastal Districts of Khulna, Satkhira, Bagerhat, Pirojpur, Jhalokathi, Borguna, Barishal, Bhola, Patuakhali and their offshore island and chars will come under great **Great Danger Signal No. Ten (R) Ten**.
- Maritime ports of Chattogram and Cox’s Bazar have been advised keep hoisted **Great Danger Signal No. Nine (R) Nine**.
- The coastal districts of Chattogram, Cox’s Bazar, Feni, Cumilla, Noakhali, Laxmipur, Chandpur and their offshore island and chars will come under great **Great Danger Signal No. Nine (R) Nine**.

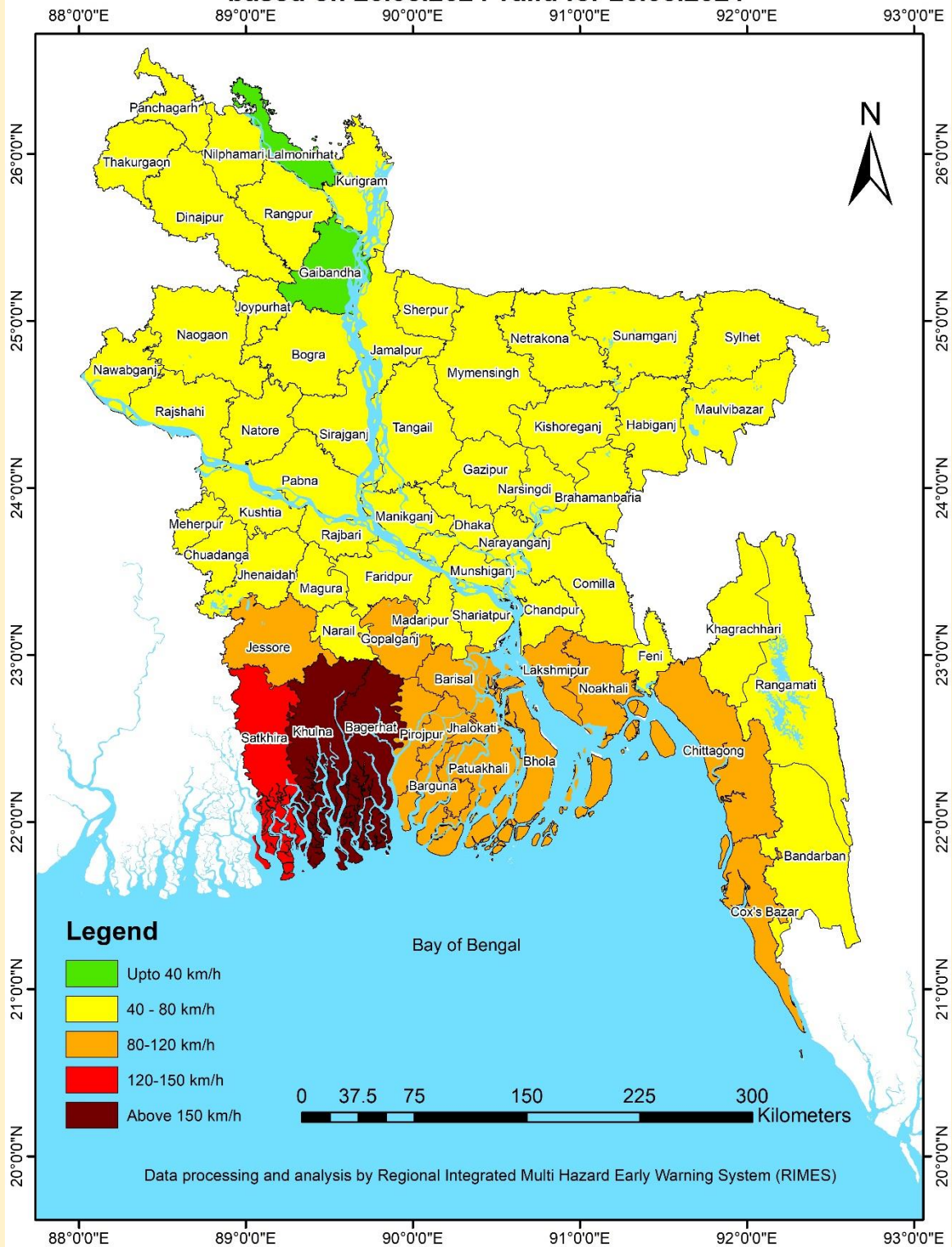
This update is prepared as a forecast guidance by [Regional Integrated Multi-Hazard Early Warning System \(RIMES\)](#) in collaboration with Bangladesh Meteorological Department. Visit [www.bmd.gov.bd](http://www.bmd.gov.bd) for bulletins.

- Riverports of the districts of Khulna Satkhira Bagherhat, Pirojpur, Jhalokathi, Borguna, Bhola, Patuakhali, Barishal, Noakhali, Laxmipur, Feni, Chandpur, Chattogram, Cox's Bazar have been advised to lower Riverine Denger Level No. Three but instead hoist **Riverine Great Danger Signal No. Four (R) Four**.
- Under the peripheral effect of the Severe Cyclone and steep pressure gradient, the the low-lying areas of the coastal districts of Satkhira, Khulna, Bagerhat, Pirojpur, Jhalokathi. Borguna, Bhola, Patuakhali, Barishal, Noakhali, Laxmipur, Feni, Chandpur, Cumilla, Chattogram, Cox's Bazar, and their offshore islands and chars are likely to be inundated by wind driven surge of **8-12 feet** height above normal astronomic tide.
- Under the influence of the Cyclone Rajshahi, Rangpur, Mymensingh, Dhaka, Khulna, Barishal, Chattogram, and Sylhet division are likely to be experienced of **heavy rainfall (44-88 mm)** to **very heavy rainfall (≥89 mm)** with gusty/squally wind. Due to very heavy rainfall landslide may occur at places over the hilly regions of Cox's Bazar, Bandarban, Rangamati, Khagrachari and Chattogram.
- All fishing boats and trawlers over North Bay and Deep Sea have been advised to remain in shelter till further notice.



This update is prepared as a forecast guidance by [Regional Integrated Multi-Hazard Early Warning System \(RIMES\)](#) in collaboration with Bangladesh Meteorological Department. Visit [www.bmd.gov.bd](http://www.bmd.gov.bd) for bulletins.

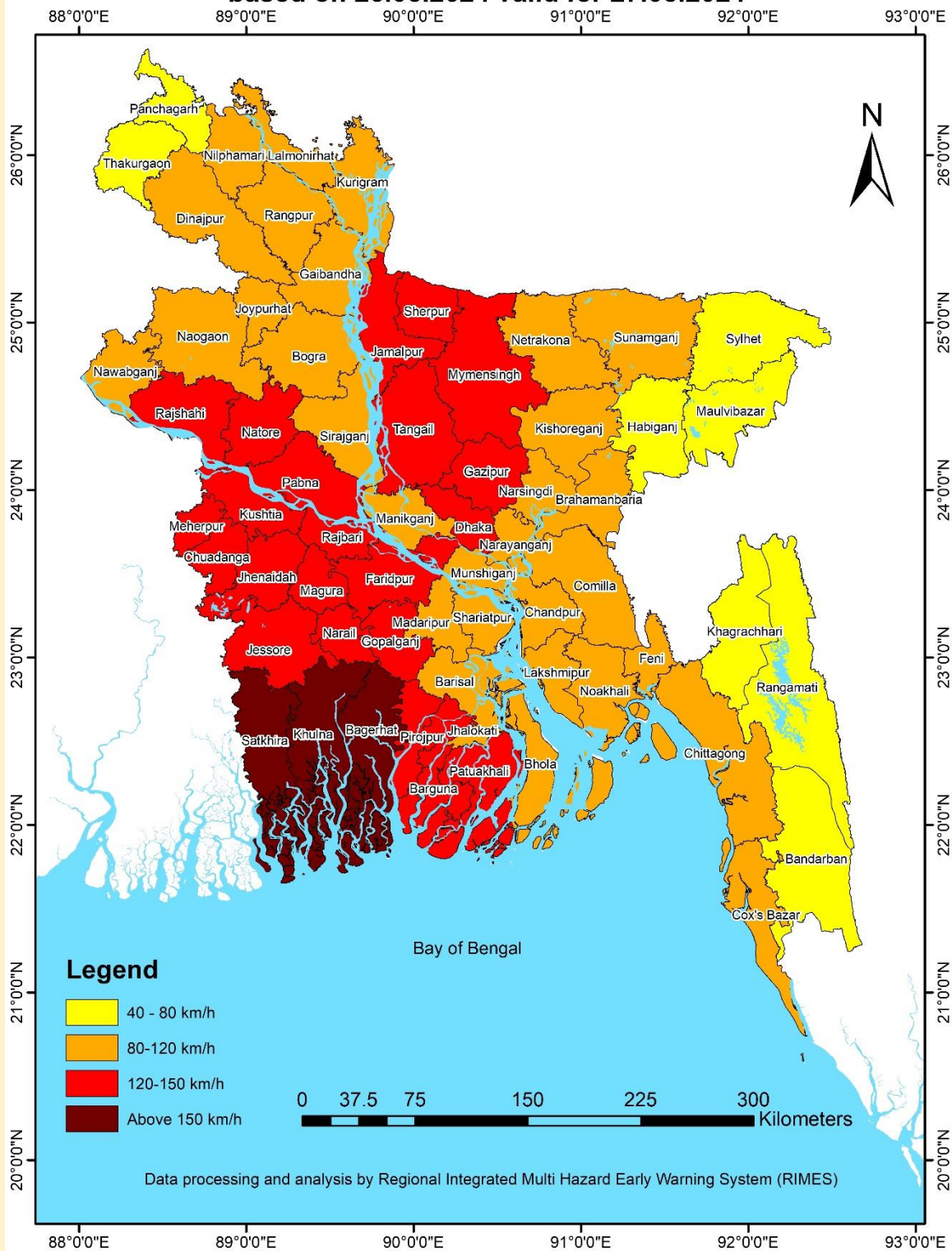
**ECMWF Wind Gust Forecast during the passage of Cyclone 'Remal'  
based on 26.05.2024 valid for 26.05.2024**



This update is prepared as a forecast guidance by [Regional Integrated Multi-Hazard Early Warning System \(RIMES\)](#) in collaboration with Bangladesh Meteorological Department. Visit [www.bmd.gov.bd](http://www.bmd.gov.bd) for bulletins.

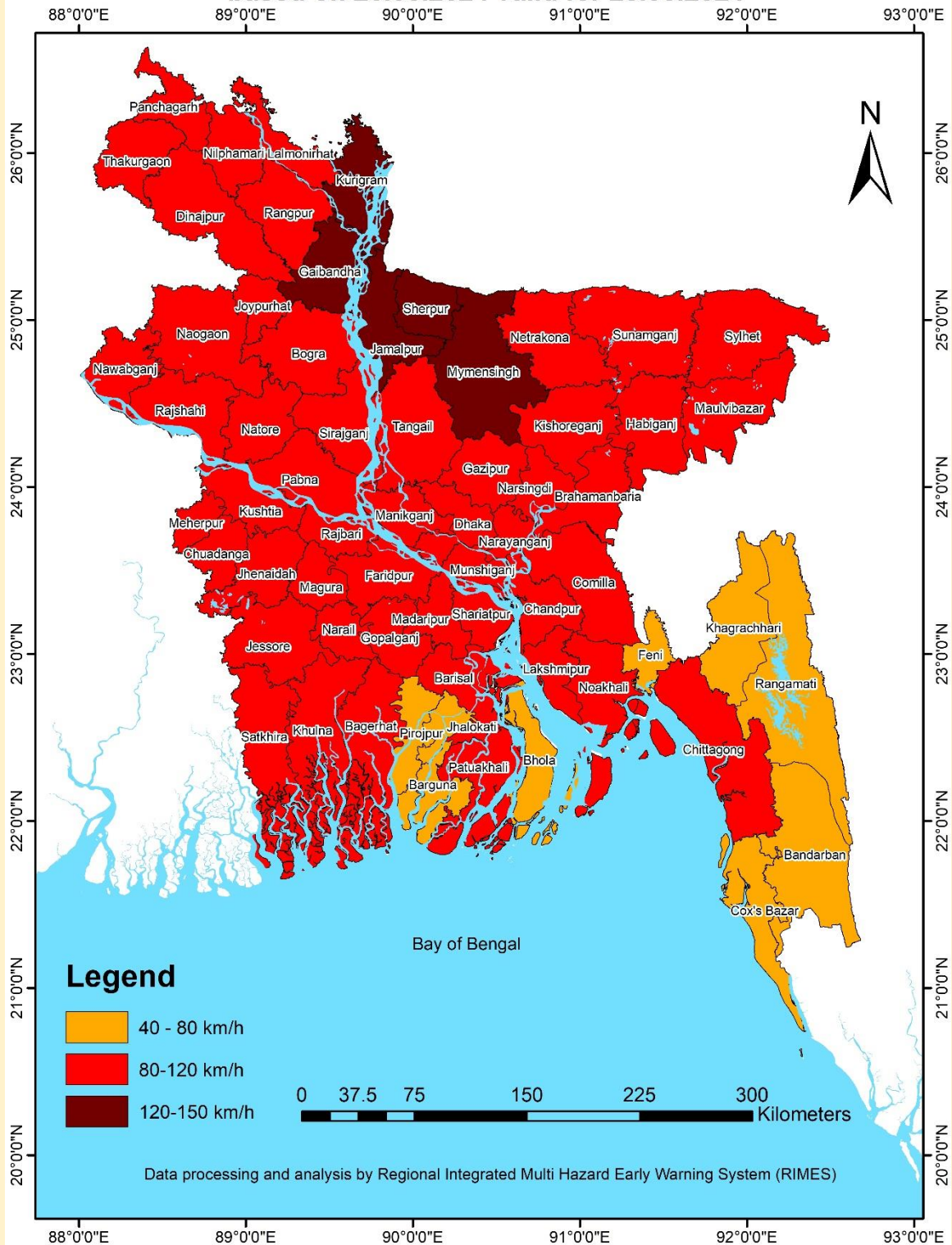


**ECMWF Wind Gust Forecast during the passage of Cyclone 'Remal'**  
**based on 26.05.2024 valid for 27.05.2024**



This update is prepared as a forecast guidance by [Regional Integrated Multi-Hazard Early Warning System \(RIMES\)](#) in collaboration with Bangladesh Meteorological Department. Visit [www.bmd.gov.bd](http://www.bmd.gov.bd) for bulletins.

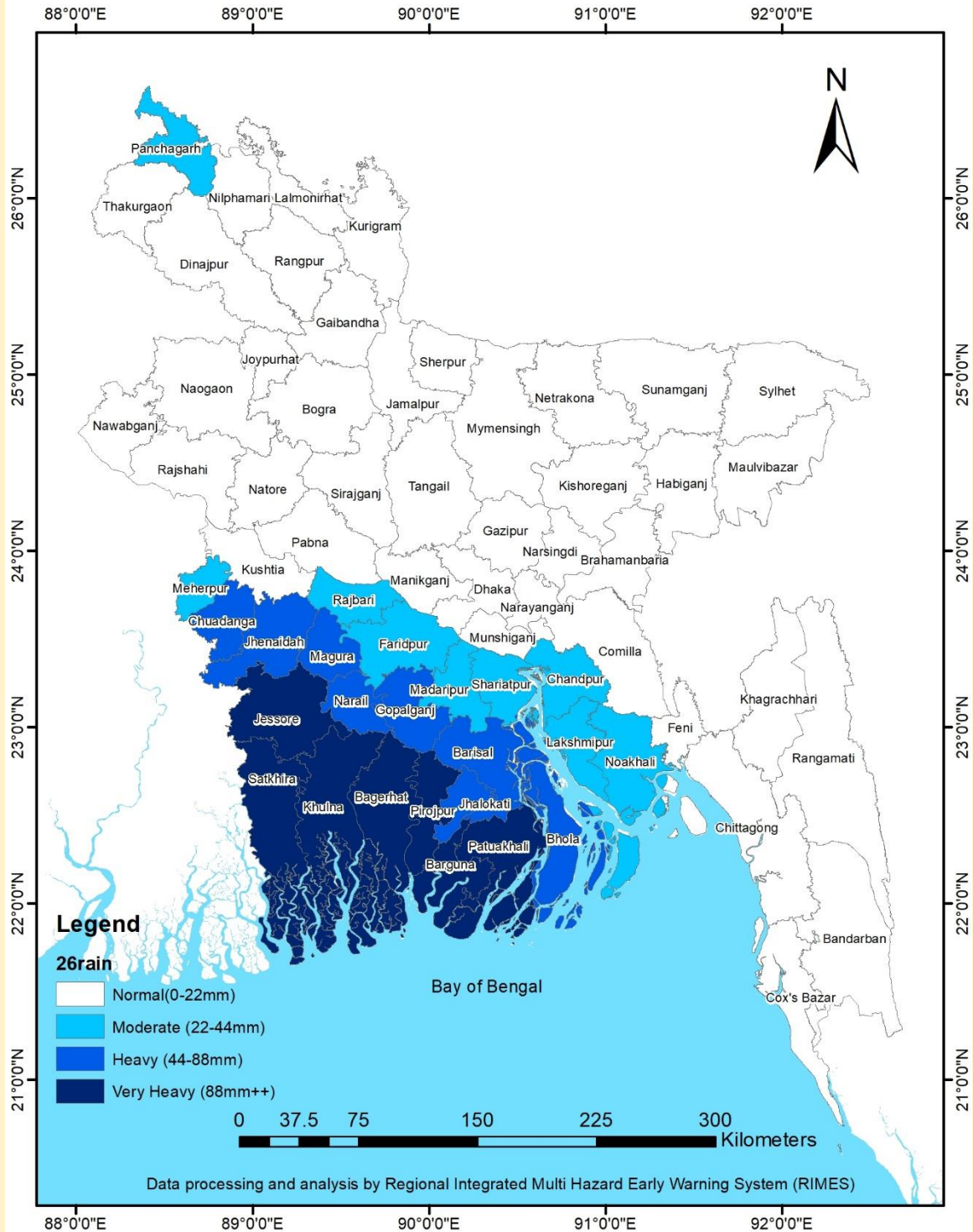
# ECMWF Wind Gust Forecast during the passage of Cyclone 'Remal' based on 26.05.2024 valid for 28.05.2024



This update is prepared as a forecast guidance by [Regional Integrated Multi-Hazard Early Warning System \(RIMES\)](#) in collaboration with Bangladesh Meteorological Department. Visit [www.bmd.gov.bd](http://www.bmd.gov.bd) for bulletins.

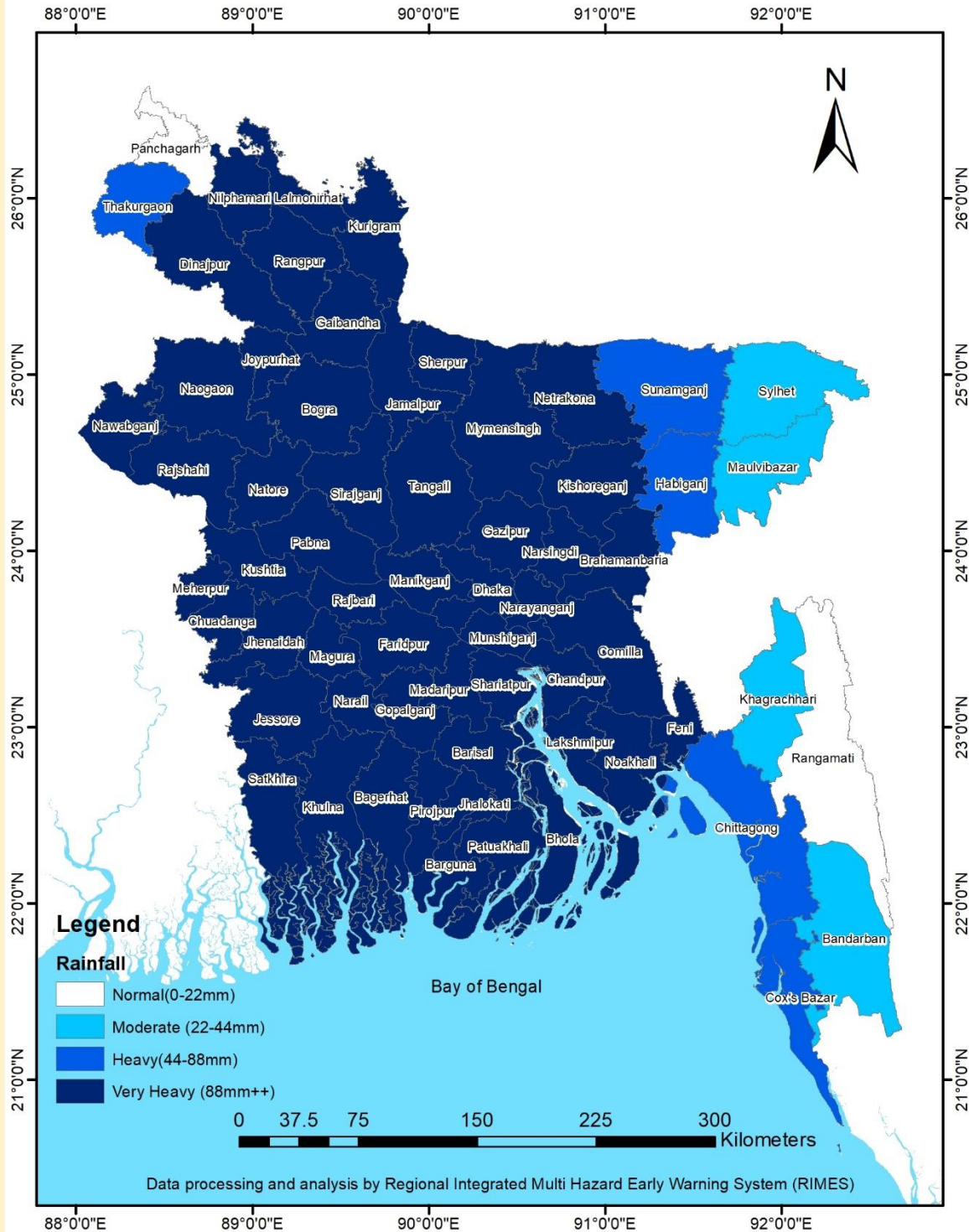


ECMWF Daily Accumulated Rainfall Forecast during the passage of  
Cyclone 'Remal' based on 26.05.2024 valid for 26.05.2024



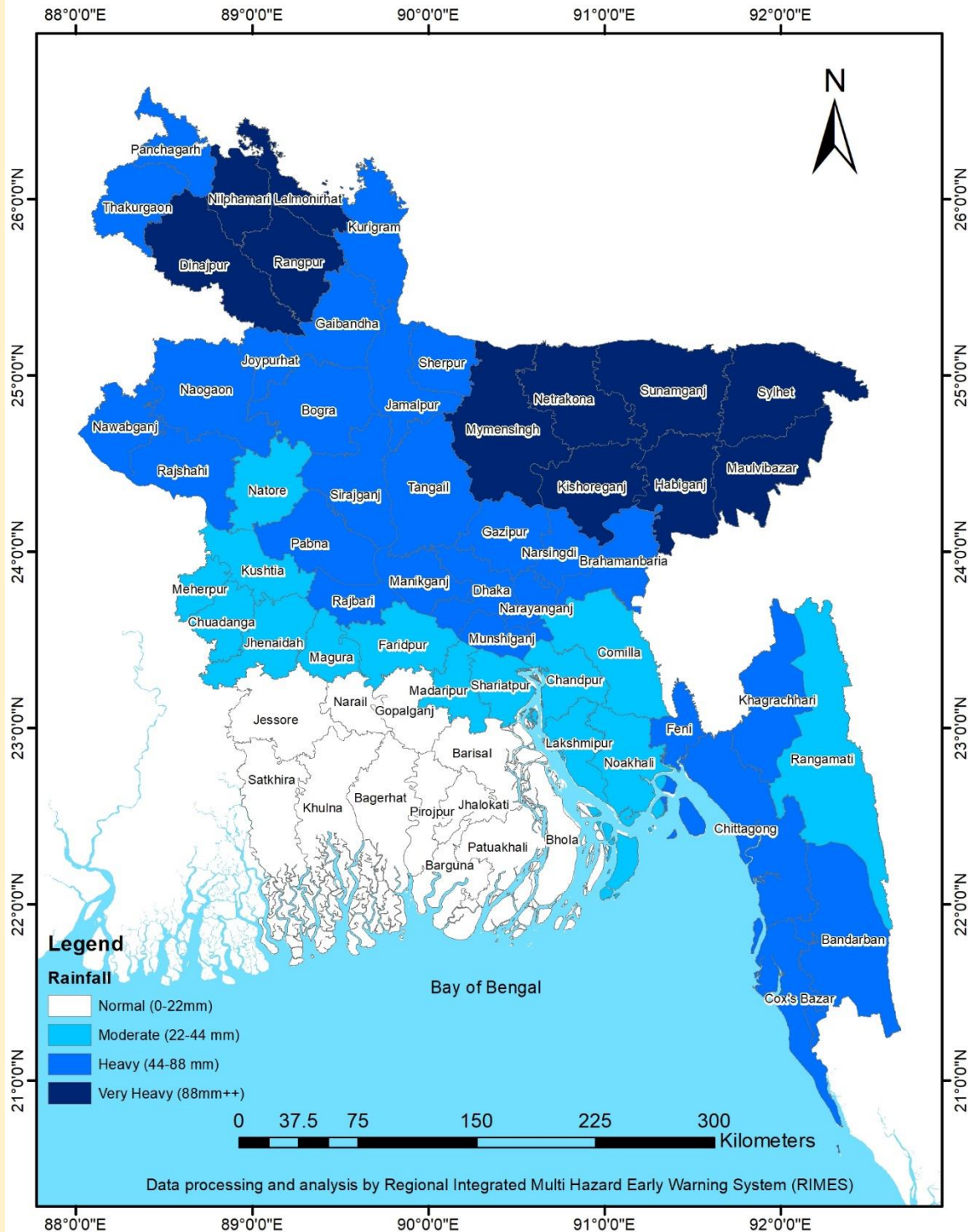
This update is prepared as a forecast guidance by [Regional Integrated Multi-Hazard Early Warning System \(RIMES\)](#) in collaboration with Bangladesh Meteorological Department. Visit [www.bmd.gov.bd](http://www.bmd.gov.bd) for bulletins.

ECMWF Daily Accumulated Rainfall Forecast during the passage of  
Cyclone 'Remal' based on 26.05.2024 valid for 27.05.2024



This update is prepared as a forecast guidance by [Regional Integrated Multi-Hazard Early Warning System \(RIMES\)](#) in collaboration with Bangladesh Meteorological Department. Visit [www.bmd.gov.bd](http://www.bmd.gov.bd) for bulletins.

ECMWF Daily Accumulated Rainfall Forecast during the passage of  
Cyclone 'Remal' based on 26.05.2024 valid for 28.05.2024

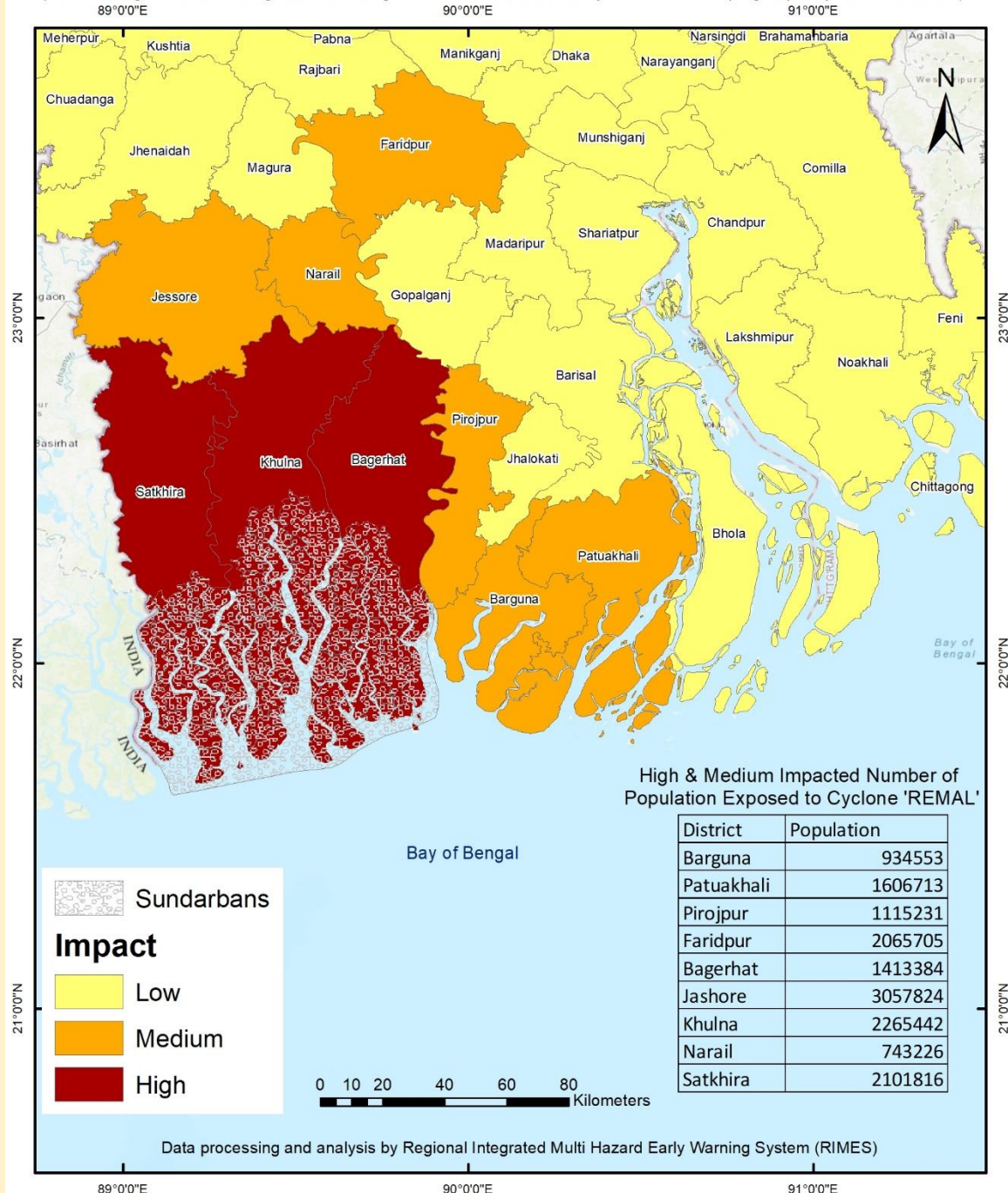


This update is prepared as a forecast guidance by [Regional Integrated Multi-Hazard Early Warning System \(RIMES\)](#) in collaboration with Bangladesh Meteorological Department. Visit [www.bmd.gov.bd](http://www.bmd.gov.bd) for bulletins.



## Potential Impact Map during the passage of Cyclone 'Remal' based on ECMWF 26.05.2024 valid for 27.05.2024

(Considering forecast Wind gust, Storm surge and Rainfall; Vulnerability and Lack of coping capacity across districts)



This update is prepared as a forecast guidance by [Regional Integrated Multi-Hazard Early Warning System \(RIMES\)](https://www.rimes.gov.bd/) in collaboration with Bangladesh Meteorological Department. Visit [www.bmd.gov.bd](https://www.bmd.gov.bd/) for bulletins.

**Important Note**

This situation update is prepared to help humanitarian workers better interpret severe weather forecasts. The document is intended for specific groups only, NOT for public dissemination. **This is not a Warning Bulletin!** To access the Special Weather Bulletins of BMD, click [here](#).

**Data Sources**

Bangladesh Meteorological Department (BMD), Regional Specialized Meteorological Center (RSMC), Indian Meteorological Department (IMD), Joint Typhoon Warning Center (JTWC), European Center for Medium-Range Weather Forecast (ECMWF), Joint Research Center – (JRC-EU)