



Special Warning Bulletin for Landslide

Issued on 28 May 2025, 21:00 BST

Situation Overview

Due to a Well-Marked Low over the northwest Bay of Bengal, the districts of Cox's Bazar, Bandarban, and Chattogram may experience heavy to very heavy rainfall during 29 to 31 May 2025. According to the NWP model guidelines, the accumulated rainfall is expected to range from 300 to 400 mm over these districts.

Last 24 hours significant observed rainfall (up to 6 PM 28 May): **Teknaf 61 mm**

High Landslide Risk Areas:

Cox's Bazar: Teknaf upazila Remains at the highest risk

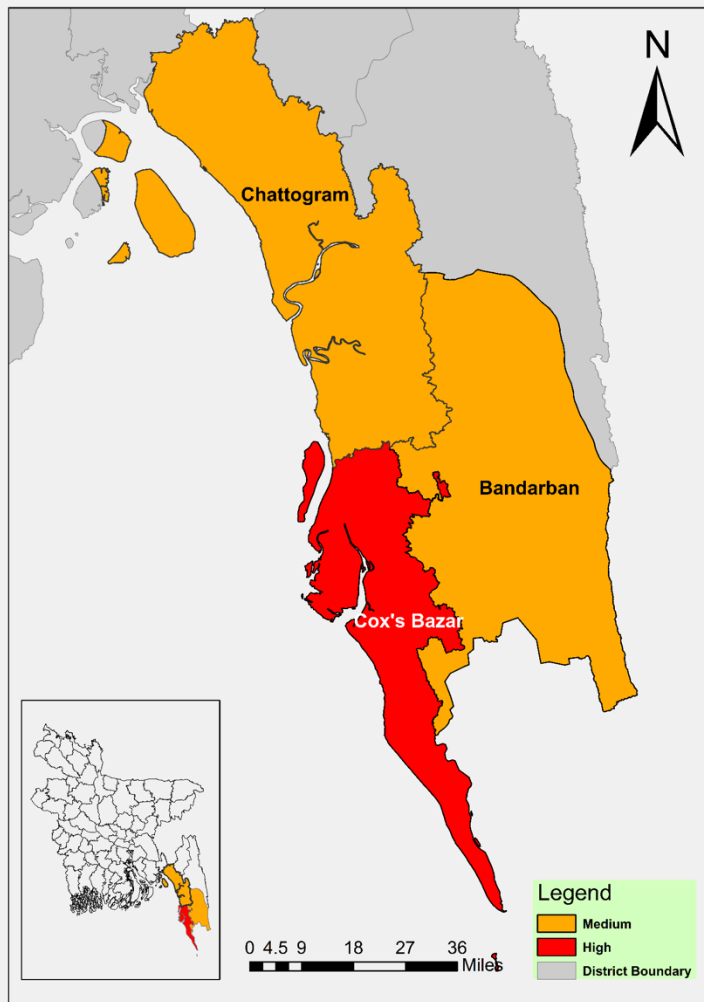
Medium Landslide Risk Areas:

Bandarban: Risky areas at Bandarban includes Naikhyonchari, Sonaychari, and Duwchari at Naikhyonchari Upazila; Lama Sadar, Gajalia, and Fasiakhali unions at Lama Upazila.

Chattogram: Pukuria and Sadhanpur unions at Banskhali Upazila; and Wards No. 7, 9, and 14 in Chattogram City Corporation.

Intentionally Left Blank, scroll down

Potential Risk of Landslides (as of 28.05.2025 and valid till 31.05.2025)

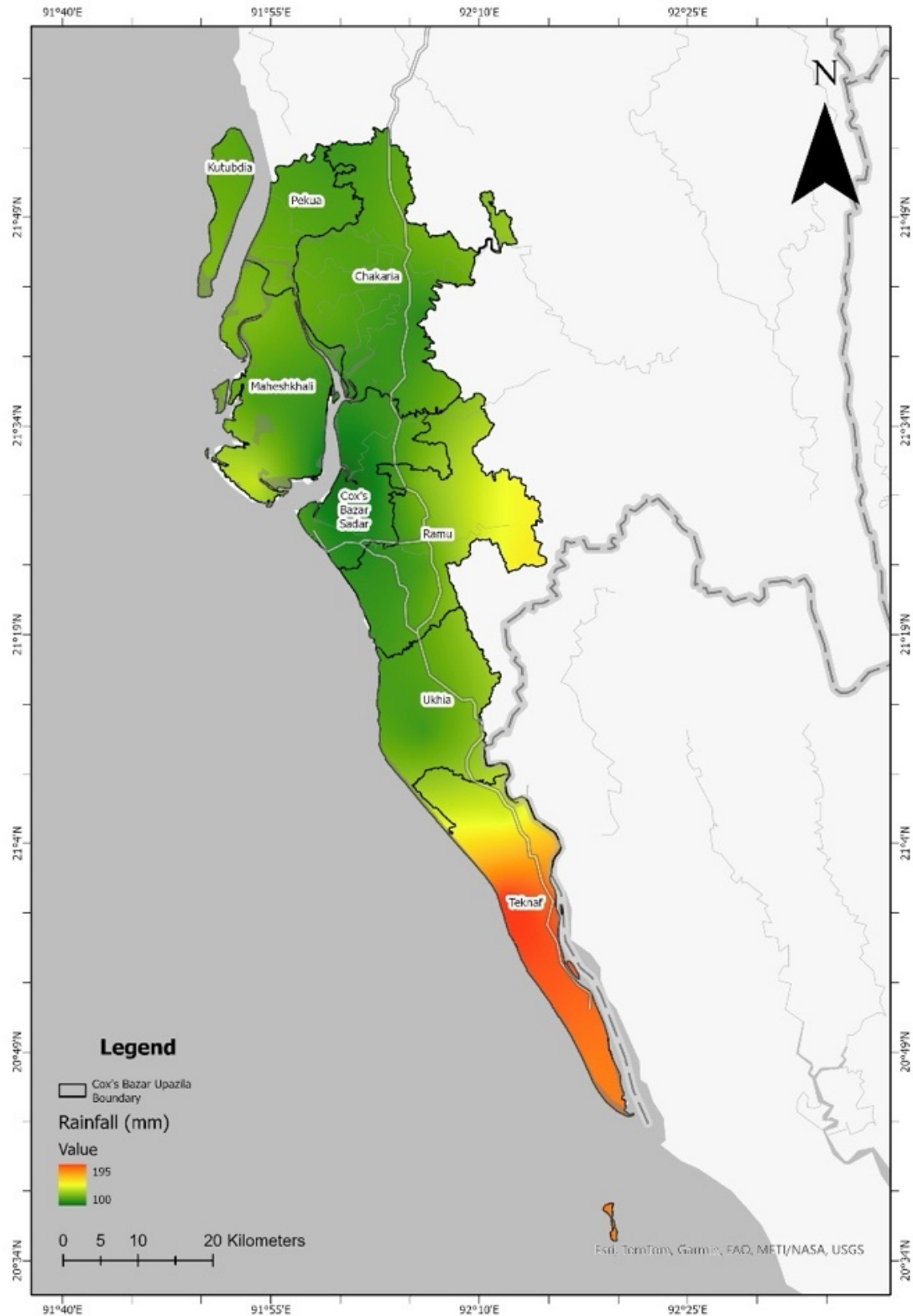


Advisory Associated with Risk Levels

- Promptly broadcast early warnings in communities
- Immediately evacuate from hilly slopes or high-risk areas to designated shelters. Prioritize the evacuation of the elderly, children, disabled individuals, and pregnant women to safety.
- Take dry food, clean water, essential medicines, a flashlight, candles, matches, clothing for 3 days and secure important documents while going to shelter
- Maintain communication with family members, neighbors, volunteers, and the local disaster management committees.
- Keep your phone charged and a power bank ready for emergency use.
- Be aware that flash floods may occur alongside landslides, so avoid staying near rivers or streams to protect yourself from floodwaters.
- Keep drains and water passages near your house clear.
- Move livestock and pets to a safe place.
- Distribute anticipatory action packages to support immediate early actions
- Follow the instructions of the local administration and disaster management committee and monitor forecasts regularly.

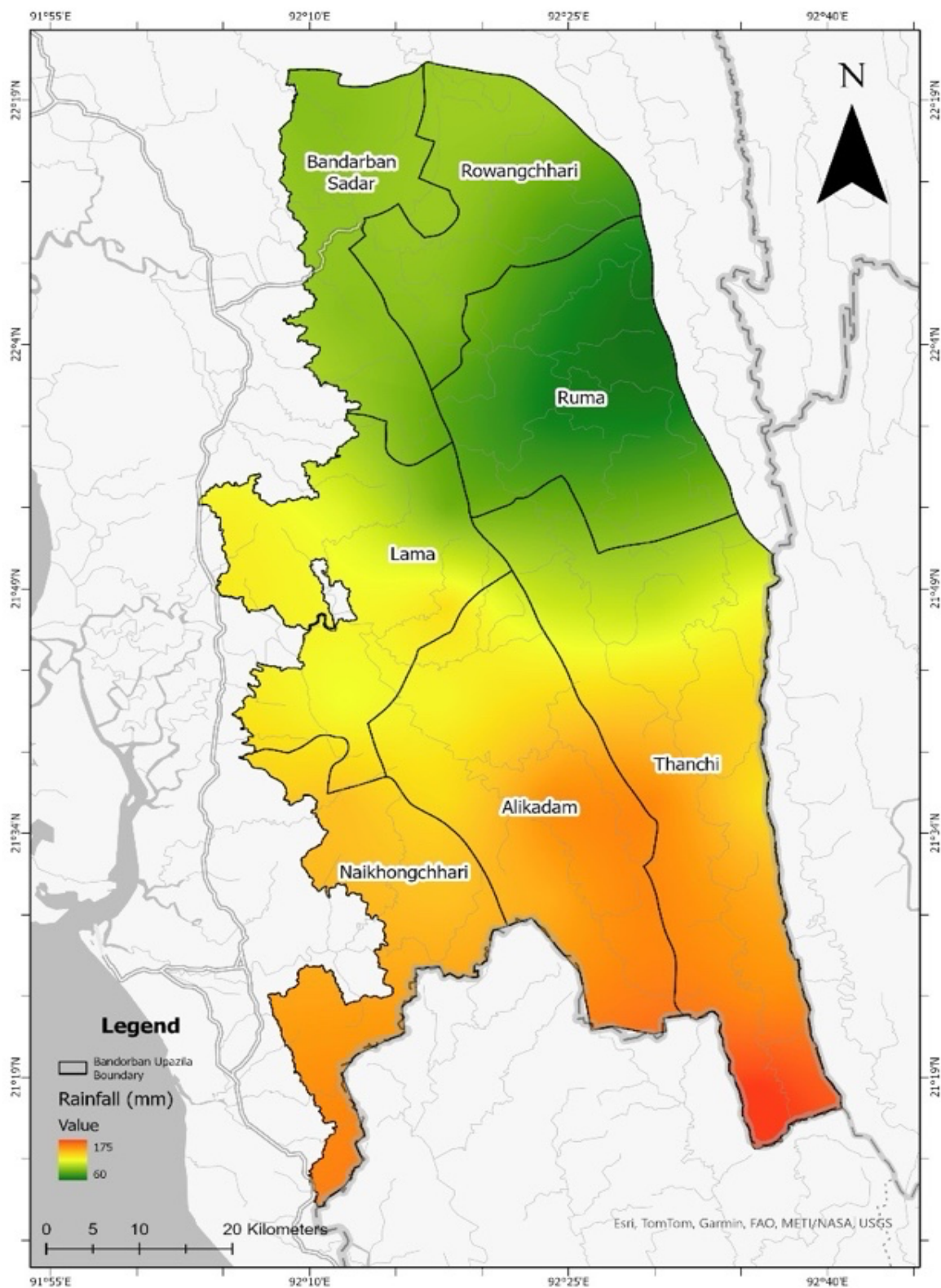
- Promptly broadcast alerts in vulnerable communities
- Evacuate elderly, children, disabled individuals, and pregnant women from hilly slopes or high-risk areas to neighboring safer places.
- Ensure you are in a safe location during the night.
- Prepare dry food, clean water, essential medicines, a flashlight, candles, matches, clothing, and secure important documents.
- Maintain communication with family members, neighbors, volunteers, and the local disaster management committee.
- Keep your phone charged and a power bank ready for emergency use.
- Remove any objects (branches, garbage) that could obstruct drainage and keep the drains and water passages near your house clear.
- Follow the instructions of the local administration and disaster management committees. Monitor forecasts regularly.

ECMWF 72 h Accumulated Rainfall Forecast over Cox's Bazar (29-31 May)



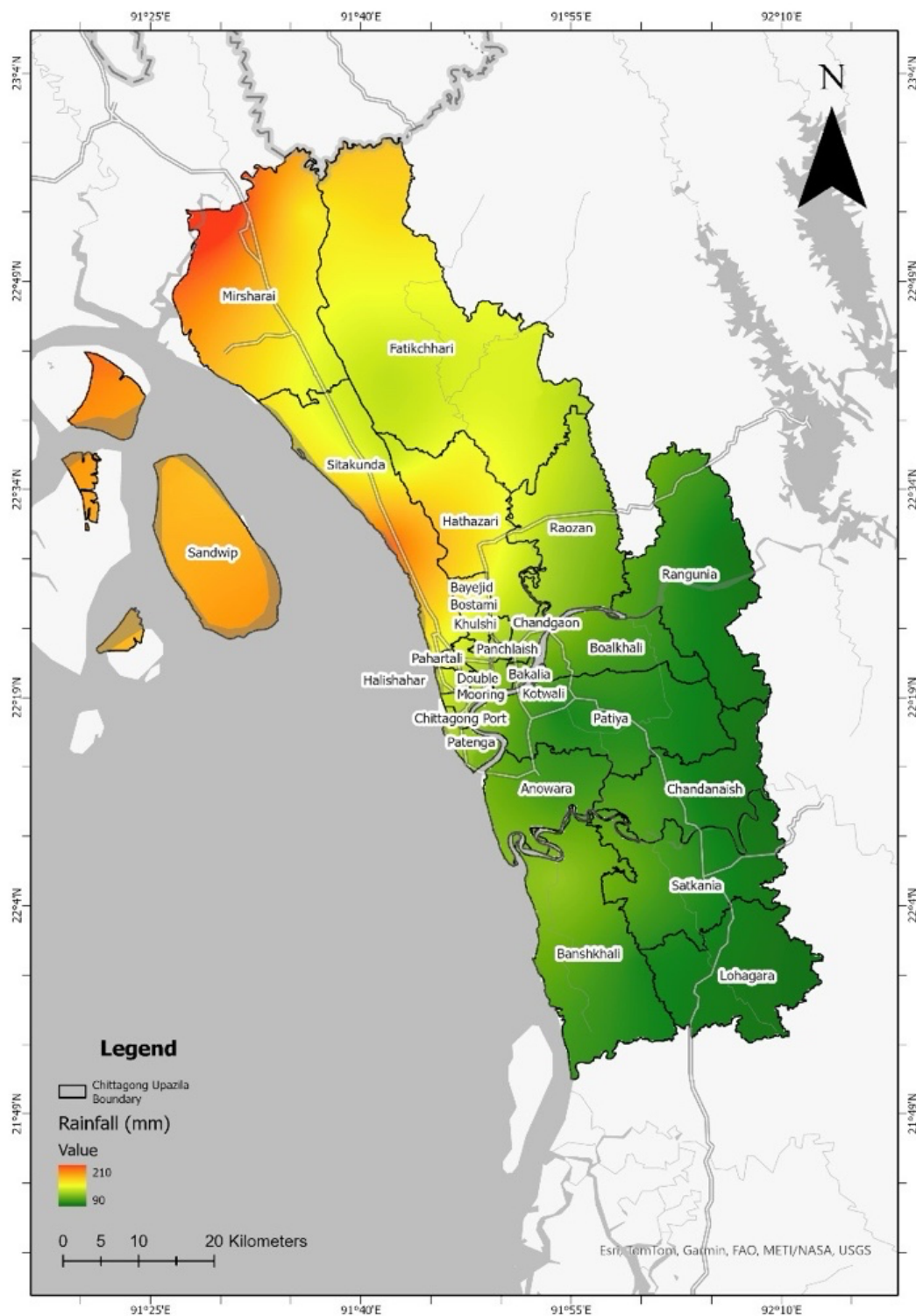
This bulletin has been prepared as a guidance by the [Regional Integrated Multi-Hazard Early Warning System \(RIMES\)](#), under the ECHO-funded project 'Anticipatory Action for Landslides Causing Displacement for Communities in Chattogram and Bandarban Districts in Bangladesh,' and the GFFO-funded project 'Child Centered Anticipatory Action for Better Preparedness of Communities and Local Institutions in Northern and Coastal Areas of Bangladesh,' implemented by Save the Children Bangladesh.

ECMWF 72 h Accumulated Rainfall Forecast over Bandarban (29-31 May)



This bulletin has been prepared as a guidance by the [Regional Integrated Multi-Hazard Early Warning System \(RIMES\)](#), under the ECHO-funded project 'Anticipatory Action for Landslides Causing Displacement for Communities in Chattogram and Bandarban Districts in Bangladesh,' and the GFFO-funded project 'Child Centered Anticipatory Action for Better Preparedness of Communities and Local Institutions in Northern and Coastal Areas of Bangladesh,' implemented by Save the Children Bangladesh.

ECMWF 72 h Accumulated Rainfall Forecast over Bandarban (29-31 May)



This bulletin has been prepared as a guidance by the [Regional Integrated Multi-Hazard Early Warning System \(RIMES\)](#), under the ECHO-funded project 'Anticipatory Action for Landslides Causing Displacement for Communities in Chattogram and Bandarban Districts in Bangladesh,' and the GFFO-funded project 'Child Centered Anticipatory Action for Better Preparedness of Communities and Local Institutions in Northern and Coastal Areas of Bangladesh,' implemented by Save the Children Bangladesh.

Rainfall Threshold Exceedance Forecast for Cox's Bazar

Duration (Hours)	Threshold for AOI* Avg.	Accumulated Rainfall						
		28.5.2025	29.5.2025	30.5.2025	31.5.2025	1.6.2025	2.5.2025	3.5.2025
24	65.00	83.84	66.65	65.25	44.32	17.43	27.41	21.80
48	95.22	144.89	150.49	131.90	109.57	61.75	44.84	49.22
72	117.66	164.47	211.54	215.74	176.22	127.00	89.16	66.64
120	153.61	208.40	259.75	296.37	321.11	277.49	221.06	176.21
168	183.10	265.35	308.78	340.30	369.41	358.12	365.95	326.70
240	220.57	317.70	377.87	426.51	441.66	435.78	429.46	435.96

Rainfall Threshold Exceedance Forecast for Bandarban Sadar, Bandarban

Duration (Hours)	Threshold for AOI* avg.	Accumulated Rainfall (mm)						
		28.5.2025	29.5.2025	30.5.2025	31.5.2025	1.6.2025	2.5.2025	3.5.2025
24	49.73	38.85	21.82	50.35	21.78	9.60	21.68	20.86
48	73.79	76.94	60.67	72.17	72.13	31.38	31.29	42.54
72	92.95	121.10	98.76	111.02	93.94	81.73	53.07	52.14
120	124.31	204.55	213.99	193.26	170.88	142.40	125.23	124.27
168	150.55	331.17	283.25	276.72	286.20	224.64	202.17	184.94
240	184.44	375.70	396.81	417.41	425.20	364.98	329.78	338.26

Rainfall Threshold Exceedance Forecast for Lama Upzila, Bandarban

Duration (hours)	Threshold for AOI* avg.	Accumulated Rainfall (mm)						
		28.5.2025	29.5.2025	30.5.2025	31.5.2025	1.6.2025	2.5.2025	3.5.2025
24	43.02	40.91	37.69	65.04	18.68	4.27	21.96	16.62
48	70.38	83.91	78.60	102.73	83.72	22.95	26.23	38.58
72	93.87	121.22	121.60	143.64	121.41	87.99	44.91	42.85
120	134.93	217.60	235.72	223.95	205.32	166.59	147.64	126.57
168	168.45	348.32	337.16	320.33	319.53	246.90	231.55	205.17
240	220.77	389.21	425.24	472.02	469.83	425.15	365.24	362.29

*AOI means Area of Interest, threshold calculated based on AOI grids